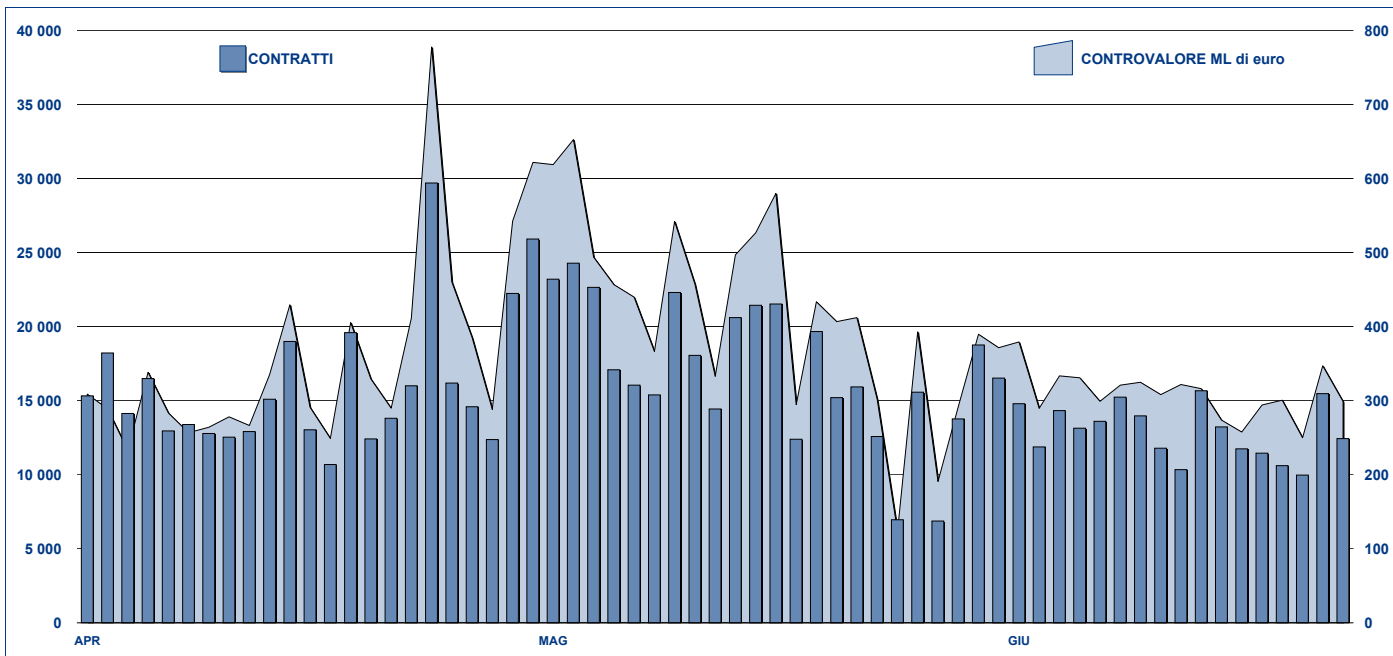


ANDAMENTO DEGLI SCAMBI



PRINCIPALI INDICATORI

	LISTINO				SCAMBI					
	QUOTATI FINE MESE	NEW LISTED NEL MESE	AUM Depositato in MT		MAGGIO 2010		GIUGNO 2010		GEN - GIU 2010	
			ML euro 31/05/2010	ML euro 30/06/2010	Contratti	Controv. ML di euro	Contratti	Controv. ML di euro	Contratti	Controv. ML di euro
ETF - DEVELOPED MARKET	155	17	5 773.47	5 533.55	200 377	5 540.03	150 765	4 087.89	801 907	22 050.58
ETF - CORPORATE E GOV BOND	79	2	4 963.80	4 964.34	21 341	1 055.82	15 796	603.21	103 466	4 960.95
ETF - EMERGING MARKETS	61	-	3 457.75	3 278.29	66 480	1 260.98	46 600	1 007.79	398 219	6 765.71
ETF - STYLE	24	1	428.54	426.18	3 061	58.73	1 852	35.32	16 222	298.16
ETF - ALTRO	121	-	1 164.94	1 121.88	16 713	350.69	11 226	255.48	94 136	1 852.86
ETC	67	-	1 625.36	1 692.19	72 272	1 120.91	64 888	893.03	368 047	4 495.32
TOTALE	507	20	17 413.85	17 016.42	380 244	9 387.16	291 127	6 882.72	1 781 997	40 423.57

STRUMENTI PIU' SCAMBIATI PER CONTRATTI NEL MESE E RELATIVO SPREAD

Denominazione	COD ALF/ISIN	CONTRATTI		SPREAD	
		numero	% TOT	BBO	25 000 €
1 LYXOR ETF XBEAR FTSE MIB	XBRMIB FR0010446666	49 315	16.9%	0.09%	0.10%
2 LYXOR ETF LEVERAGED FTSE MIB	LEVMI B FR0010446658	37 581	12.9%	0.13%	0.15%
3 ETF S LEVERAGED NATURAL GAS	LNGA JE00B2NFTQ41	15 775	5.4%	0.24%	0.29%
4 LYXOR ETF MSCI INDIA (A)	INDI FR0010361683	8 654	3.0%	0.15%	0.17%
5 LYXOR ETF FTSE MIB	ETFMIB FR0010010827	7 815	2.7%	0.07%	0.08%
6 ETF S NATURAL GAS	NGAS GB00B15KY104	6 930	2.4%	0.23%	0.25%
7 ETF S LEVERAGED CRUDE OIL	LOIL JE00B2NFTJ73	6 239	2.1%	0.23%	0.25%
8 LYXOR ETF LEVDAX	DAXLEV LU0252634307	5 508	1.9%	0.12%	0.12%
9 LYXOR ETF CHINA	CINA FR0010204081	4 765	1.6%	0.13%	0.16%
10 ISHARES S&P 500	IUSA IE0031442068	4 322	1.5%	0.07%	0.07%

STRUMENTI PIU' SCAMBIATI PER CONTROVALORE NEL MESE E RELATIVO SPREAD

Denominazione	COD ALFA ISIN	CONTROVALORE		SPREAD	
		ML di €	% TOT	BBO	25 000 €
1 LYXOR ETF XBEAR FTSE MIB	XBRMIB FR0010446666	1 078	15.7%	0.09%	0.10%
2 LYXOR ETF LEVERAGED FTSE MIB	LEVMI B FR0010446658	599	8.7%	0.13%	0.15%
3 ISHARES EURO STOXX 50	EUE IE0008471009	213	3.1%	0.09%	0.09%
4 LYXOR ETF FTSE MIB	ETFMIB FR0010010827	202	2.9%	0.07%	0.08%
5 LYXOR ETF LEVDAX	DAXLEV LU0252634307	174	2.5%	0.12%	0.12%
6 ISHARES S&P 500	IUSA IE0031442068	155	2.2%	0.07%	0.07%
7 LYXOR ETF DAX	DAXX LU0252633754	152	2.2%	0.07%	0.07%
8 ETF S LEVERAGED NATURAL GAS	LNGA JE00B2NFTQ41	152	2.2%	0.24%	0.29%
9 DB X-TRACKERS EURO STOXX 50 SIXSSX	LU0292106753	130	1.9%	0.14%	0.15%
10 ETF S PHYSICAL GOLD	PHAU JE00B1VS3770	125	1.8%	0.05%	0.05%

STRUMENTI PIU' SCAMBIATI PER CONTRATTI NELL'ANNO E RELATIVO SPREAD

Denominazione	COD ALF/ISIN	CONTRATTI		SPREAD	
		numero	% TOT	BBO	25 000 €
1 LYXOR ETF XBEAR FTSE MIB	XBRMIB FR0010446666	231 986	13.0%	0.09%	0.10%
2 LYXOR ETF LEVERAGED FTSE MIB	LEVMI B FR0010446658	172 691	9.7%	0.12%	0.14%
3 ETF S LEVERAGED NATURAL GAS	LNGA JE00B2NFTQ41	94 125	5.3%	0.25%	0.31%
4 LYXOR ETF MSCI INDIA (A)	INDI FR0010361683	64 095	3.6%	0.16%	0.20%
5 LYXOR ETF FTSE MIB	ETFMIB FR0010010827	50 237	2.8%	0.07%	0.07%
6 LYXOR ETF CHINA	CINA FR0010204081	45 017	2.5%	0.13%	0.16%
7 ETF S NATURAL GAS	NGAS GB00B15KY104	42 868	2.4%	0.24%	0.27%
8 LYXOR ETF BRAZIL (IBOVESPA) (A)	BRA FR0010408799	40 428	2.3%	0.20%	0.25%
9 ISHARES MSCI BRAZIL	IBZL IE00B0M63516	36 258	2.0%	0.17%	0.21%
10 ISHARES S&P 500	IUSA IE0031442068	31 302	1.8%	0.07%	0.07%

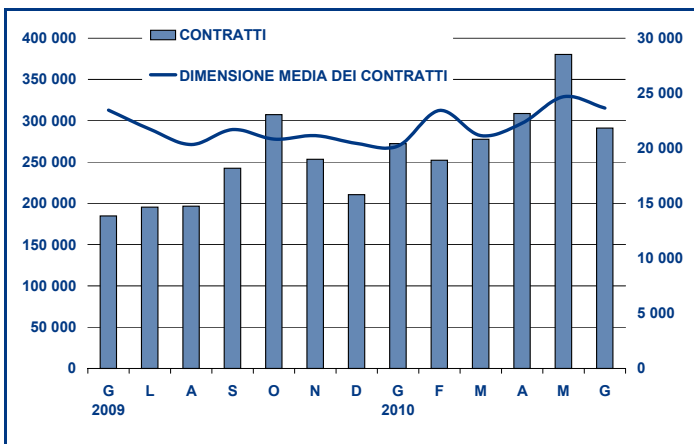
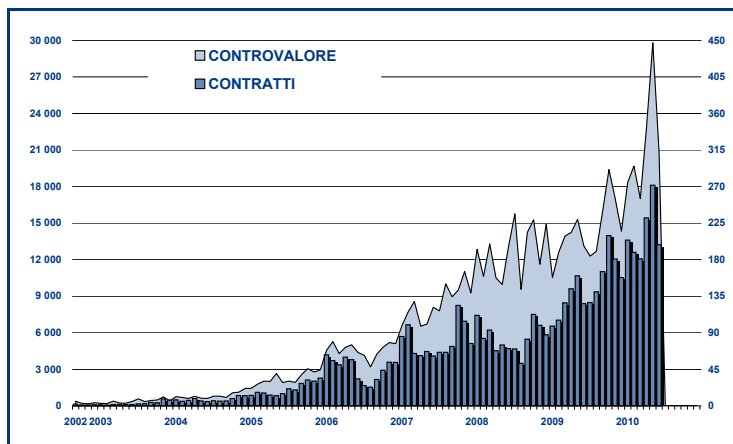
STRUMENTI PIU' SCAMBIATI PER CONTROVALORE NELL'ANNO E RELATIVO SPREAD

Denominazione	COD ALFA ISIN	CONTROVALORE		SPREAD	
		ML di €	% TOT	BBO	25 000 €
1 LYXOR ETF XBEAR FTSE MIB	XBRMIB FR0010446666	4 891	12.1%	0.09%	0.10%
2 LYXOR ETF LEVERAGED FTSE MIB	LEVMI B FR0010446658	3 077	7.6%	0.12%	0.14%
3 ISHARES EURO STOXX 50	EUE IE0008471009	1 265	3.1%	0.08%	0.09%
4 LYXOR ETF FTSE MIB	ETFMIB FR0010010827	1 254	3.1%	0.07%	0.07%
5 LYXOR ETF LEVDAX	DAXLEV LU0252634307	1 112	2.8%	0.14%	0.15%
6 ISHARES S&P 500	IUSA IE0031442068	1 101	2.7%	0.07%	0.07%
7 LYXOR ETF EURO CASH	LEONIA FR0010510800	763	1.9%	0.01%	0.01%
8 LYXOR ETF MSCI INDIA (A)	INDI FR0010361683	753	1.9%	0.16%	0.20%
9 LYXOR ETF DAX	DAXX LU0252633754	739	1.8%	0.07%	0.08%
10 LYXOR ETF EURO STOXX 50	MSE FR0007054358	736	1.8%	0.12%	0.12%

ANDAMENTO SCAMBI PER SOGLIE DI CONTROLVALORE

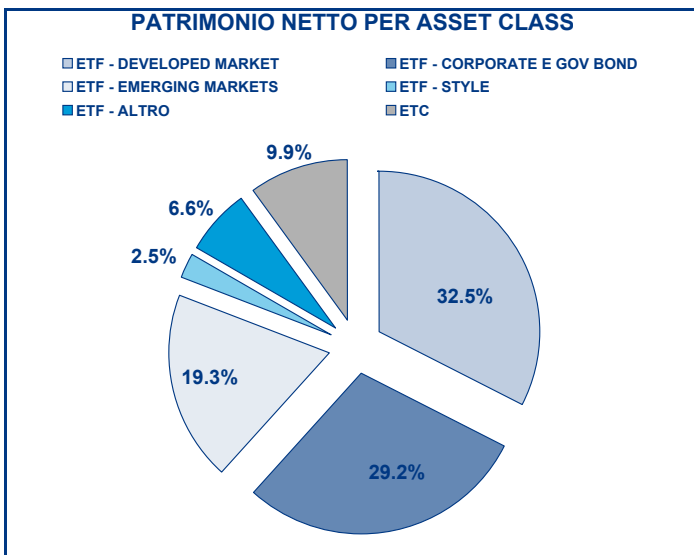
SOGLIE DI CONTROLVALORE		MAGGIO 2010		GIUGNO 2010		ANNO 2010			
		Contratti	ML di euro	Contratti	ML di euro	Contratti	% TOT	ML di euro	% TOT
0	500	26 422	7.0	21 266	5.5	138 862	7.8%	34.1	0.1%
500	1 000	25 613	19.3	19 154	14.4	123 746	6.9%	92.3	0.2%
1 000	2 000	49 419	71.8	38 164	56.0	235 862	13.2%	344.7	0.9%
2 000	3 000	37 898	92.7	26 615	65.1	168 849	9.5%	414.4	1.0%
3 000	4 000	24 451	85.3	21 361	75.2	125 990	7.1%	438.7	1.1%
4 000	5 000	27 325	122.2	18 526	82.9	112 261	6.3%	504.5	1.2%
5 000	6 000	18 057	98.7	13 832	75.4	90 756	5.1%	494.3	1.2%
6 000	7 000	12 558	81.0	9 820	63.4	54 853	3.1%	354.8	0.9%
7 000	8 000	9 004	67.4	8 090	60.6	45 242	2.5%	338.9	0.8%
8 000	9 000	9 327	79.3	6 235	52.9	42 929	2.4%	364.6	0.9%
9 000	10 000	10 178	97.3	7 450	71.3	44 810	2.5%	429.2	1.1%
10 000	15 000	31 516	384.6	25 892	317.2	157 119	8.8%	1 924.9	4.8%
15 000	20 000	16 633	292.1	13 336	233.9	84 891	4.8%	1 474.4	3.6%
20 000	25 000	13 304	294.4	9 427	209.4	56 596	3.2%	1 255.3	3.1%
25 000	30 000	8 364	230.0	6 565	180.0	37 942	2.1%	1 042.6	2.6%
30 000	35 000	5 316	171.6	4 321	138.7	27 013	1.5%	872.7	2.2%
35 000	40 000	5 072	190.5	4 289	160.9	23 531	1.3%	882.1	2.2%
40 000	45 000	5 208	220.8	3 436	145.6	19 929	1.1%	844.3	2.1%
45 000	50 000	3 820	181.2	2 613	124.4	15 134	0.8%	720.5	1.8%
50 000	75 000	10 529	638.5	8 149	493.4	48 078	2.7%	2 925.7	7.2%
75 000	100 000	6 694	587.3	5 706	502.3	31 380	1.8%	2 728.8	6.8%
100 000	125 000	5 063	567.1	4 308	477.3	22 444	1.3%	2 505.1	6.2%
125 000	150 000	4 244	580.8	2 397	325.2	15 854	0.9%	2 170.6	5.4%
150 000		14 229	4 226.0	10 175	2 951.6	57 926	3.3%	17 266.3	42.7%
TOTALE		380 244	9 387.2	291 127	6 882.7	1 781 997		40 423.6	

EVOLUZIONE SCAMBI



FOCUS

MESE	ETF PIU' SCAMBIATO PER CONTROLVALORE		ETF PIU' SCAMBIATO PER CONTRATTI	
	COD. ALFA	EURO	COD. ALFA	NUMERO
GIUGNO	LEONIA	359 735 004	XBRMIB	22 718
LUGLIO	XBRMIB	432 277 872	XBRMIB	28 293
AGOSTO	LEVMI	378 528 076	XBRMIB	22 950
SETTEMBRE	XBRMIB	569 463 778	XBRMIB	30 084
OTTOBRE	XBRMIB	697 186 945	XBRMIB	38 810
NOVEMBRE	XBRMIB	675 952 669	XBRMIB	35 201
DICEMBRE	XBRMIB	347 472 099	XBRMIB	19 582
GENNAIO 2010	XBRMIB	462 424 020	XBRMIB	25 764
FEBBRAIO	XBRMIB	745 194 115	XBRMIB	37 501
MARZO	XBRMIB	520 770 821	XBRMIB	27 007
APRILE	XBRMIB	688 925 674	XBRMIB	32 451
MAGGIO	XBRMIB	1 396 182 116	XBRMIB	59 948
GIUGNO	XBRMIB	1 077 877 314	XBRMIB	49 315



SPREAD PER SOGLIE DI LIQUIDITA'

	BBO		5 000 €		15 000 €		25 000 €	
	SPREAD	% RILEVAZ	SPREAD	% RILEVAZ	SPREAD	% RILEVAZ	SPREAD	% RILEVAZ
ETF - DEVELOPED MARKET	0.16%	99.87%	0.16%	99.84%	0.16%	99.80%	0.16%	99.78%
AZIONARIO ITALIA	0.09%	99.94%	0.09%	99.94%	0.09%	99.94%	0.09%	99.94%
AZIONARIO EUROPA - AREA	0.17%	99.84%	0.17%	99.81%	0.17%	99.76%	0.17%	99.74%
AZIONARIO EUROPA - SINGOLI PAESI	0.13%	99.93%	0.13%	99.92%	0.13%	99.89%	0.13%	99.82%
AZIONARIO MONDO	0.22%	99.97%	0.22%	99.95%	0.23%	99.91%	0.23%	99.91%
AZIONARIO NORD AMERICA	0.13%	99.85%	0.13%	99.77%	0.13%	99.72%	0.13%	99.70%
AZIONARIO PACIFICO	0.24%	99.92%	0.25%	99.92%	0.26%	99.91%	0.27%	99.91%
AZIONARIO SHORT (SVILUPPATI)	0.17%	100.00%	0.17%	99.99%	0.17%	99.97%	0.18%	99.93%
BUYWRITE - COVERED CALL	1.49%	92.59%	1.56%	91.74%	1.58%	91.61%	1.56%	91.22%
LEVERAGED LONG	0.19%	99.99%	0.19%	99.98%	0.20%	99.96%	0.20%	99.91%
LEVERAGED SHORT	0.59%	99.98%	0.59%	99.95%	0.60%	99.89%	0.60%	99.86%
PROTECTIVE PUT	0.97%	95.77%	0.81%	92.81%	0.82%	92.76%	0.82%	92.76%
SEMI-ATTIVI	0.11%	100.00%	0.12%	100.00%	0.12%	99.98%	0.12%	99.97%
ETF - EMERGING MARKETS	0.23%	99.96%	0.24%	99.94%	0.25%	99.92%	0.26%	99.84%
AZIONARIO EMERGENTI - AFRICA/MEDIO ORIENTE	0.56%	99.88%	0.60%	99.79%	0.64%	99.65%	0.64%	98.83%
AZIONARIO EMERGENTI - ASIA	0.19%	99.99%	0.19%	99.98%	0.20%	99.98%	0.21%	99.95%
AZIONARIO EMERGENTI - CENTRO/SUD AMERICA	0.23%	100.00%	0.24%	100.00%	0.25%	100.00%	0.26%	99.97%
AZIONARIO EMERGENTI - EST EUROPA	0.36%	99.98%	0.37%	99.91%	0.38%	99.87%	0.38%	99.67%
AZIONARIO EMERGENTI - MONDO	0.23%	99.89%	0.23%	99.85%	0.24%	99.82%	0.25%	99.77%
AZIONARIO SHORT (EMERGENTI)	0.82%	96.12%	0.82%	96.00%	0.82%	95.81%	0.82%	95.81%
ETF - CORPORATE GOVERNMENT BONDS	0.14%	99.03%	0.15%	98.90%	0.16%	98.37%	0.16%	97.96%
INFLAZIONE	0.24%	99.73%	0.26%	99.68%	0.28%	99.61%	0.29%	99.54%
LIQUIDITA'	0.04%	98.09%	0.05%	97.85%	0.06%	95.84%	0.06%	95.09%
OBBLIGAZIONARIO CORPORATE	0.10%	99.92%	0.11%	99.92%	0.12%	99.89%	0.12%	99.80%
OBBLIGAZIONARIO MISTO	0.26%	100.00%	0.27%	100.00%	0.27%	100.00%	0.27%	100.00%
OBBLIGAZIONARIO SHORT	0.31%	96.78%	0.32%	96.43%	0.33%	95.84%	0.31%	93.30%
TITOLI DI STATO - EMERGENTI	0.44%	100.00%	0.49%	100.00%	0.57%	94.27%	0.65%	82.27%
TITOLI DI STATO - EURO	0.17%	98.85%	0.18%	98.70%	0.18%	98.57%	0.19%	98.49%
TITOLI DI STATO - MONDO	0.42%	95.45%	0.41%	91.75%	0.42%	91.60%	0.42%	91.50%
TITOLI DI STATO - NON EURO	0.20%	98.87%	0.20%	98.62%	0.20%	98.50%	0.20%	98.49%
ETF - STYLE	0.29%	99.76%	0.29%	99.61%	0.29%	99.57%	0.30%	99.56%
AZIONARIO STYLE	0.29%	99.76%	0.29%	99.61%	0.29%	99.57%	0.30%	99.56%
ETF - ALTRO	0.31%	99.08%	0.31%	98.91%	0.31%	98.83%	0.31%	98.79%
AZIONARIO SETTORIALI	0.21%	99.95%	0.21%	99.93%	0.21%	99.93%	0.21%	99.93%
AZIONARIO TEMATICI	0.51%	99.24%	0.52%	98.90%	0.52%	98.71%	0.52%	98.59%
COMMODITIES	0.27%	99.14%	0.26%	98.80%	0.27%	98.71%	0.27%	98.69%
INDICI DI CREDITO	0.30%	82.33%	0.30%	82.23%	0.30%	82.01%	0.30%	82.01%
REAL ESTATE	0.42%	99.82%	0.43%	99.57%	0.44%	99.51%	0.44%	99.33%
ETF	0.18%	99.56%	0.19%	99.48%	0.19%	99.29%	0.20%	99.13%

I dati sono ottenuti mediante osservazioni del book a 5 livelli effettuate ogni cinque minuti durante i giorni di negoziazione del mese oggetto di analisi.

Market Spread: è la differenza tra il prezzo in acquisto e quello in vendita, divisi per la loro media semplice, a cui è risultato possibile effettuare una transazione per ogni importo d'investimento analizzato.

% Rilevaz: è la percentuale sul totale delle osservazioni nelle quali sarebbe possibile effettuare una transazione per ciascun importo d'investimento oggetto di analisi.

La media indicata per ciascuna asset class è la media ponderata sugli Asset Under Management depositati in Monte Titoli di ciascun ETF.

Novità del mese

Nel primo semestre del 2010 il mercato ETFplus si è caratterizzato per il notevole incremento del numero di strumenti quotati e dei volumi delle contrattazioni. Sono stati infatti 107 i nuovi ETF entrati in quotazione nel semestre che insieme agli strumenti già presenti a fine 2009 (ETF 333, ETC 67) hanno generato 1 781 997 contratti per un controvalore di 40 423.6 milioni di euro pari ad una variazione rispettivamente del 62% e del 69% rispetto al primo semestre 2009 (1 055 264 contratti e 24 894.5 milioni di euro i dati del primo semestre 2009).

Nel mese di giugno il mercato ETFplus ha dato inoltre il benvenuto ad un nuovo emittente, si tratta di UBS che con 16 ETF ha fatto per la prima volta l'ingresso nel mercato italiano: Euro Stoxx 50 A, Euro Stoxx 50 I, MSCI Emu A, MSCI Emu I, MSCI Emu Value A, MSCI Europe A, MSCI Europe I, MSCI Japan I, MSCI Japan A, MSCI Pacific (Ex Japan) A, MSCI Usa A, MSCI Usa I, MSCI World A, MSCI World I, MSCI Canada A, MSCI Canada I.

ETFs Fund Company plc, inoltre, ha lanciato due nuovi ETF strutturati sull'indice FTSE MIB, l'ETF FTSE MIB leveraged (2x) fund e l'ETF FTSE MIB super short strategy (2x). Nello stesso periodo sono entrati in negoziazione nel segmento OICR indicizzati - classe 1 due ETF della db x-trackers II: il db x-trackers II Eur liq corporate 100 e il db x-trackers II Eur inflation swap 5 Y.

Markets Analysis

Piazza Affari, 6 - 20123 Milano

T +39 02 72426.478 | Fax +39 02 8646.4323

e-mail: research@borsaitaliana.it

www.borsaitaliana.it



Borsa Italiana

London Stock Exchange Group

ANDAMENTO PRINCIPALI INDICATORI

Denominazione	TIPO	Codice alfab.	ISIN	Prezzo di Riferimento			Scambi nel mese		Scambi nel periodo	
				31/05/2010	30/06/2010	variaz. %	Contratti	Controv. €	GEN - GIU 2010	
				euro	euro				Contratti	Controv. €
ETF										
1 ISHARES EURO STOXX 50	ETF	EUE	IE0008471009	26.610	25.885	-2.7%	3 696	213 175 166	26 710	1 265 416 001
2 ISHARES STOXX EUROPE 50	ETF	EUN	IE0008470928	24.125	23.570	-2.3%	440	24 431 952	3 907	214 461 272
3 LYXOR ETF EURO STOXX 50	ETF	MSE	FR0007054358	26.880	26.675	-0.8%	2 424	85 193 340	19 081	735 931 329
4 AMUNDI ETF S&P EUROPE 350 FUND	ETF	CASAME	IE0031091428	126.720	126.190	-0.4%	96	2 109 088	757	10 280 072
5 AMUNDI ETF S&P EURO FUND	ETF	CASAMO	IE0031091642	132.640	131.590	-0.8%	34	381 433	295	5 948 170
6 LYXOR ETF DOW JONES INDUSTRIAL AVERAGE	ETF	DJE	FR0007056841	83.610	81.610	-2.4%	526	24 572 178	4 336	169 251 817
7 LYXOR ETF NASDAQ-100	ETF	UST	FR0007063177	6.060	5.790	-4.5%	1 266	31 161 100	8 521	140 859 882
8 ISHARES S&P 500	ETF	IUSA	IE0031442068	8.843	8.483	-4.1%	4 322	154 513 428	31 302	1 101 346 402
9 POWERSHARES EQQQ FUND	ETF	EQQQ	IE0032077012	37.310	35.500	-4.9%	1 457	35 305 464	8 850	280 728 942
10 LYXOR ETF DJ GLOBAL TITANS 50	ETF	MGT	FR0007075494	17.000	16.525	-2.8%	134	808 744	1 154	9 635 998
11 LYXOR ETF FTSE MIB	ETF	ETFMIB	FR0010010827	20.003	19.917	-0.4%	7 815	201 964 727	50 237	1 254 285 531
12 ISHARES FTSEUROFIRST 80	ETF	IEUR	IE0004855221	8.190	8.115	-0.9%	25	788 322	229	3 994 950
13 ISHARES FTSEUROFIRST 100	ETF	IEUT	IE0030974079	20.125	19.820	-1.5%	12	144 467	148	5 008 534
14 ISHARES MARKIT IBOXX EURO CORPORATE BOND	ETF	IBCX	IE0032523478	121.020	121.630	0.5%	1 844	65 067 254	13 832	650 345 411
15 LYXOR ETF EUROMTS GLOBAL	ETF	EMG	FR0010028860	134.440	133.170	-0.9%	306	9 079 615	2 849	154 959 353
16 LYXOR ETF EUROMTS 3-5Y	ETF	EM35	FR0010037234	130.020	129.310	-0.5%	869	24 738 925	6 267	317 154 864
17 LYXOR ETF EUROMTS 10-15Y	ETF	EM1015	FR0010037242	137.750	135.480	-1.6%	162	2 712 774	1 374	86 181 206
18 ISHARES MSCI JAPAN	ETF	IJPN	IE00B02KXK56	7.755	7.545	-2.7%	1 863	40 601 594	17 199	421 192 628
19 ISHARES FTSE/XINHUA CHINA 25	ETF	FXC	IE00B02KXK85	90.620	92.570	2.2%	2 949	46 157 009	25 720	389 927 238
20 ISHARES EURO STOXX MID	ETF	DJMC	IE00B02KXK92	31.880	31.480	-1.3%	100	1 992 862	970	9 351 744
21 ISHARES EURO STOXX SMALL	ETF	DJSC	IE00B02KXK00	21.560	21.125	-2.0%	182	4 444 484	1 534	28 932 216
22 LYXOR ETF MSCI EMU GROWTH	ETF	GWT	FR0010168765	67.560	67.680	0.2%	59	146 991	622	13 904 737
23 LYXOR ETF MSCI EMU VALUE	ETF	VAL	FR0010168781	101.890	100.120	-1.7%	77	1 124 399	670	9 333 007
24 LYXOR ETF MSCI EMU SMALL CAP	ETF	MMS	FR0010168773	140.580	138.170	-1.7%	53	659 657	736	11 160 324
25 LYXOR ETF EUROMTS INFLATION LINKED	ETF	EMI	FR0010174292	118.660	116.430	-1.9%	935	11 814 228	7 170	150 956 787
26 LYXOR ETF EUROMTS 1-3Y	ETF	EM13	FR0010222224	117.730	117.380	-0.3%	734	33 577 999	6 375	319 807 510
27 LYXOR ETF EASTERN EUROPE	ETF	EST	FR0010204073	19.150	17.870	-6.7%	538	7 814 518	4 459	74 448 284
28 LYXOR ETF CHINA	ETF	CINA	FR0010204081	120.880	119.280	-1.3%	4 785	81 102 413	45 017	706 801 594
29 LYXOR ETF JAPAN (TOPIX)	ETF	JPN	FR0010245514	78.710	77.630	-1.4%	468	15 456 982	3 495	89 734 738
30 ISHARES EUROSTOXX TOTAL MKT GROWTH LARGE	ETF	IDJG	IE00B0M62V02	19.615	19.970	1.8%	23	601 724	179	6 198 024
31 ISHARES EURO STOXX SELECT DIVIDEND 30	ETF	IDVY	IE00B0M62S72	17.170	17.170	0.0%	506	7 425 977	4 388	90 269 431
32 ISHARES EUROSTOXX TOTAL MKT VALUE LARGE	ETF	IDJV	IE00B0M62T89	19.285	18.740	-2.8%	80	2 190 501	395	8 439 491
33 ISHARES FTSE/EPRA EUROPEAN PROPERTY FUND	ETF	IPRP	IE00B0M63284	21.140	22.080	4.4%	86	1 255 234	860	13 650 086
34 ISHARES FTSE 100	ETF	ISF	IE0005042456	6.120	6.020	-1.6%	339	24 058 915	3 097	153 075 191
35 EASYETF FTSE EPRA EUROZONE	ETF	EEE	LU0192230622	146.120	144.050	-1.4%	35	166 748	281	2 780 306
36 EASYETF S&P GSNE	ETF	GSNEEU	LU0230448493	161.240	159.950	-0.8%	5	54 882	49	1 028 376
37 LYXOR ETF COMMODITIES CRB	ETF	CRB	FR0010270033	20.070	20.290	1.1%	1 243	32 971 816	9 222	201 040 556
38 LYXOR ETF MSCI EUROPE	ETF	MEU	FR0010261198	86.870	86.970	0.1%	490	21 711 651	5 414	163 732 955
39 ISHARES MSCI EASTERN EUROPE	ETF	IEER	IE00B0M63953	21.940	20.960	-4.5%	440	6 395 707	3 173	46 496 968
40 ISHARES MSCI AC FAR EAST EX-JAPAN	ETF	IFFF	IE00B0M63730	29.960	30.470	1.7%	538	24 678 649	3 543	170 511 165
41 ISHARES MSCI BRAZIL	ETF	IBZL	IE00B0M63516	41.050	41.040	0.0%	3 750	89 298 178	36 258	531 977 366
42 ISHARES MSCI EMERGING MARKETS	ETF	IEEM	IE00B0M63177	29.310	29.365	0.2%	3 504	95 458 810	28 713	538 703 120
43 ISHARES MSCI KOREA	ETF	IKOR	IE00B0M63391	22.760	23.255	2.2%	418	15 629 162	3 654	93 424 188
44 ISHARES MSCI TAIWAN	ETF	ITWN	IE00B0M63623	23.550	23.260	-1.2%	183	5 989 591	1 590	46 472 541
45 ISHARES MSCI WORLD	ETF	IWRD	IE00B0M62Q58	18.810	18.260	-2.9%	454	18 579 520	3 536	157 376 998
46 ISHARES BARCAP EUR INFLATION LINKED BOND	ETF	IBCI	IE00B0M62X26	182.960	180.750	-1.2%	225	9 776 284	1 740	102 985 922
47 ISHARES MARKIT IBOXX \$ CORPORATE BOND	ETF	LQDE	IE0032895942	81.590	83.830	2.7%	874	13 200 968	4 510	59 803 772
48 ISHARES FTSE UK DIVIDEND PLUS	ETF	IUKD	IE00B0M63060	8.045	8.290	3.0%	68	2 164 876	523	6 037 768
49 LYXOR ETF MSCI USA	ETF	LUSA	FR0010296061	85.110	81.660	-4.1%	767	25 358 374	4 562	128 396 763
50 LYXOR ETF MSCI AC ASIA-PACIFIC EX JAPAN	ETF	AEJ	FR0010312124	31.200	31.035	-0.5%	723	15 008 689	5 745	153 257 378
51 LYXOR ETF MSCI WORLD	ETF	WLD	FR0010315770	88.960	86.870	-2.3%	550	23 172 784	3 595	166 278 089
52 EASYETF EUROSTOXX	ETF	ETX	FR0010230516	28.620	28.330	-1.0%	11	318 440	77	1 568 902
53 LYXOR ETF RUSSIA (DJ RUSINDEX TITANS 10)	ETF	RUS	FR0010326140	29.680	28.090	-5.4%	2 349	51 148 905	22 321	355 048 424
54 ISHARES DJ ASIA/PACIFIC SEL DIVIDEND 30	ETF	IAPD	IE00B14X4T88	19.390	19.590	1.0%	168	3 260 238	1 930	14 794 517
55 ISHARES MSCI NORTH AMERICA	ETF	INAA	IE00B14X4M10	17.735	17.045	-3.9%	318	5 777 025	2 109	52 471 474
56 ISHARES MSCI EUROPE EX UK	ETF	IEUX	IE00B14X4N27	19.540	19.580	0.2%	163	13 544 004	394	26 142 343
57 ISHARES BARCAP \$ TREASURY BOND 1-3	ETF	IBTS	IE00B14X4S71	106.000	106.580	0.5%	869	34 370 739	4 863	230 268 186
58 ISHARES BARCAP EURO GOV BOND 1-3	ETF	IBGS	IE00B14X4Q57	136.790	136.760	0.0%	291	27 537 278	1 832	233 027 374
59 LYXOR ETF TURKEY (DJ TURKEY TITANS 20)	ETF	TUR	FR0010326256	48.910	49.465	1.1%	908	17 109 379	7 728	100 231 607
60 LYXOR ETF STOXX EUROPE 600 BANKS	ETF	BNK	FR0010345371	19.830	19.790	-0.2%	1 164	20 129 730	7 291	182 499 498
61 LYXOR ETF STOXX EUROPE 600 CHEMICALS	ETF	CHM	FR0010345470	44.530	45.975	3.2%	84	1 142 313	716	12 865 329
62 LYXOR ETF STX EU 600 CONSTRUCT&MATERIALS	ETF	CST	FR0010345504	25.920	25.300	-2.4%	53	245 833	573	7 279 596
63 LYXOR ETF STOXX EUROPE 600 FOOD&BEVERAGE	ETF	FOO	FR0010344861	32.750	33.890	3.5%	287	17 722 152	1 772	39 513 549
64 LYXOR ETF STOXX EUROPE 600 HEALTHCARE	ETF	HLT	FR0010344879	37.200	38.515	3.5%	340	5 482 808	3 453	55 071 365
65 LYXOR ETF STOXX EUROPE 600 INSURANCE	ETF	INS	FR0010344903	14.550	14.455	-0.7%	111	2 289 065	1 630	34 001 772
66 LYXOR ETF STOXX EUROPE 600 MEDIA	ETF	MDA	FR0010344929	16.590	16.630	0.2%	31	392 631	392	7 945 793
67 LYXOR ETF STX EU 600 PERSONAL&HOUSEHOLD	ETF	PHG	FR0010344978	35.830	37.180	3.8%	90	590 250	678	11 647 804
68 LYXOR ETF STOXX EUROPE 600 RETAIL	ETF	RTA	FR0010344986	26.390	25.745	-2.4%	21	69 803	210	4 076 961
69 LYXOR ETF STOXX EUROPE 600 TECHNOLOGY	ETF	TNO	FR0010344796	19.980	19.660	-1.6%	156	1 932 966	1 974	33 798 476
70 LYXOR ETF STOXX EUROPE 600 UTILITIES	ETF	UTI	FR0010344853	31.310	30.360	-3.0%	177	1 959 811	1 857	31 430 505
71 LYXOR ETF COMMODITIES CRB NON-ENERGY (A)	ETF	CRBN	FR0010346205	17.580	17.735	0.9%	342	6 856 833	2 523	40 086 735
72 LYXOR ETF STOXX EU 600 AUTOMOBILES&PARTS	ETF	AUTP	FR0010344630	24.270	24.905	2.6%	121	3 274 652	686	13 668 064
73 EASYETF S&P GSCI ULTRA LIGHT ENERGY	ETF	GSUEUR	LU0246046329	194.670	193.700	-0.5%	19	356 112	109	3 278 700
74 EASY ETF IBOXX LIQUID SOVER EXTRA SHORT	ETF	ISS	FR0010276923	154.940	154.790	-0.1%	19	8 303 623	103	18 804 399
75 EASY ETF IBOXX LIQUID SOVEREIGNS GLOBAL	ETF	ISM	FR0010276949	172.410	172.460	0.0%	5	53 304	51	3 871 232
76 EASY ETF IBOXX LIQUID SOVEREIGNS LONG	ETF	ISL	FR0010276964	188.060	187.560	-0.3%	10	13 169 041	50	22 607 405
77 LYXOR ETF DAX	ETF	DAXX	LU0252633754	58.600	58.630	0.1%	2 749	152 289 168	13 836	739 449 981
78 LYXOR ETF LEVDAX	ETFS	DAXLEV	LU0252634307	37.400	37.345	-0.1%	5 508	173 637 555	30 227	1 111 795 782
79 LYXOR ETF HONG KONG (HSI) (A)	ETF	HK	FR0010361675	20.910	21.000	0.4%	321	7 938 991	2 615	99 815 082
80 LYXOR ETF MSCI KOREA (A)	ETF	KOR	FR0010361691	31.370	32.000	2.0%	458	14 767 350	3 746	92 041 741
81 LYXOR ETF DAXPLUS COVERED CALL	ETFS	DAXCC	LU0252635023	52.700	51.980	-1.4%	4	18 668	65	364 316
82 LYXOR ETF STOXX EUROPE 600 OIL & GAS	ETF	OIL	FR0010344960	30.570	28.370	-7.2%	672	22 072 033	3 927	85 485 899
83 LYXOR ETF STX EUROPE 600 BASIC RESOURCES	ETF	BRES	FR0010345389	49.500	46.670	-5.7%	1 521	37 562 937	13 965	329 356 483
84 LYXOR ETF STX EU 600 FINANCIAL SERVICES	ETF	FINS	FR0010345363	22.930	23.080	0.7%	24	986 580	346	9 209 016
85 LYX										

ANDAMENTO PRINCIPALI INDICATORI

Denominazione	TIPO	Codice alfab.	ISIN	Prezzo di Riferimento			Scambi nel mese		Scambi nel periodo	
				31/05/2010	30/06/2010	variaz. %	Contratti	Controv. €	GEN - GIU 2010	
				euro	euro				Contratti	Controv. €
101 ISHARES BARCAP \$ TREASURY BOND 7-10	ETF	IBTM	IE00B1FZS798	140.040	143.420	2.4%	411	15 261 379	1 371	46 200 355
102 ISHARES BARCAP EURO GOVERNMENT BOND 3-5	ETF	IBGX	IE00B1FZS681	150.200	149.630	-0.4%	168	7 706 459	1 003	129 602 226
103 ISHARES BARCAP EURO GOVERNMENT BOND 7-10	ETF	IBGM	IE00B1FZS806	161.470	161.080	-0.2%	154	26 621 121	895	149 215 718
104 ISHARES BARCAP EURO GOVERNMENT BOND 15-30	ETF	IBGL	IE00B1FZS913	162.330	161.210	-0.7%	154	5 954 823	805	26 841 141
105 ISHARES \$ TIPS	ETF	ITPS	IE00B1FZSC47	133.070	135.050	1.5%	141	3 779 753	660	25 955 360
106 ISHARES FTSE EPRA/NAREIT ASIA PROPERTY	ETF	IASP	IE00B1FZS244	16.030	16.370	2.1%	91	566 028	773	4 487 011
107 ISHARES FTSE EPRA/NAREIT DEVELOPED MKTS	ETF	IWDP	IE00B1FZS350	13.220	13.040	-1.4%	69	1 244 482	669	11 370 776
108 ISHARES FTSE EPRA/NAREIT US PROPERTY	ETF	IUPS	IE00B1FZSF77	13.530	13.100	-3.2%	304	4 630 644	2 463	33 708 875
109 ISHARES FTSE/MACQUARIE GLOB INFRASTR 100	ETF	INFR	IE00B1FZS467	16.270	16.095	-1.1%	43	1 804 345	361	9 318 341
110 ISHARES MSCI TURKEY	ETF	ITKY	IE00B1FZS574	27.630	27.725	0.3%	391	5 547 399	3 470	37 096 250
111 ISHARES FTSE UK ALL STOCKS GILT	ETF	IGLT	IE00B1FZSB30	12.400	12.890	4.0%	191	1 875 474	1 160	12 917 615
112 LYXOR ETF EURO STOXX 50 BUYWRITE	ETFS	DJBW	FR0010389205	11.910	11.690	-1.8%	12	45 056	151	1 094 251
113 LYXOR ETF PRIVEX (A)	ETF	PVX	FR0010407197	3.715	3.555	-4.3%	66	168 553	815	3 490 168
114 LYXOR ETF BRAZIL (IBOVESPA) (A)	ETF	BRA	FR0010408799	27.020	27.310	1.1%	4 219	57 689 538	40 428	471 970 893
115 DB X-TRACKERS MSCI EMERGING MARKETS ETF	ETF	XMEM	LU0292107645	27.600	27.815	0.8%	444	52 522 796	2 723	255 394 737
116 DB X-TRACKERS MSCI EM ASIA TRN INDEX ETF	ETF	XMAS	LU0292107991	25.270	25.735	1.8%	266	16 482 894	1 448	85 913 086
117 DB X-TRACKERS MSCI EM LATAM TRN ETF	ETF	XMLA	LU0292108619	43.270	43.495	0.5%	98	4 803 557	980	74 751 948
118 DB X-TRACKERS MSCI EM EMEA TRN INDEX ETF	ETF	XMEA	LU0292109005	23.630	22.780	-3.6%	51	1 189 967	569	14 791 833
119 DB X-TRACKERS MSCI TAIWAN TRN INDEX ETF	ETF	XMTW	LU0292109187	11.960	11.800	-1.3%	86	4 052 739	571	39 859 541
120 DB X-TRACKERS MSCI BRAZIL TRN INDEX ETF	ETF	XMBR	LU0292109344	47.320	47.290	-0.1%	574	25 545 175	5 157	137 930 019
121 DB X-TRACKERS S&P CNX NIFTY ETF	ETF	XNIF	LU0292109690	89.850	94.540	5.2%	254	17 263 977	1 519	79 506 367
122 DB X-TRACKERS MSCI KOREA TRN INDEX ETF	ETF	XMKO	FR0010389206	35.480	36.065	1.6%	181	9 145 320	1 086	80 990 246
123 DB X-TRACKERS FTSE/XINHUA CHINA 25 ETF	ETF	XX25	LU0292109856	22.850	23.410	2.5%	776	18 326 290	5 780	141 476 547
124 DB X-TRACKERS EURO STOXX SELECT DIV 30	ETF	XD3E	LU0292095535	17.020	16.975	-0.3%	30	1 071 697	291	10 273 406
125 DB X-TRACKERS STOXX GLOB SELECT DIV 100	ETF	XGSD	LU0292096186	20.050	20.255	1.0%	86	1 886 771	707	22 434 975
126 DB X-TRACKERS STOXX 600 BASIC RESOURCES	ETF	XSPR	LU0292100806	84.470	79.610	-5.8%	89	2 124 029	1 451	47 263 898
127 DB X-TRACKERS STOXX 600 OIL & GAS ETF	ETF	XSER	LU0292101796	55.020	50.750	-7.8%	60	744 033	604	17 045 617
128 DB X-TRACKERS STOXX 600 HEALTH CARE ETF	ETF	XSDR	LU0292103222	51.780	53.810	3.9%	27	1 210 557	267	11 264 974
129 DB X-TRACKERS STOXX 600 BANKS ETF	ETF	XSTR	LU0292103651	36.200	36.095	-0.3%	122	4 034 145	1 323	35 577 982
130 DB X-TRACKERS STOXX 600 TELECOMMUNICAT	ETF	XSKR	LU0292104030	42.290	43.525	2.9%	7	192 857	116	10 144 778
131 DB X-TRACKERS STOXX 600 TECHNOLOGY ETF	ETF	XSBR	LU0292104469	26.140	25.715	-1.6%	29	2 406 962	221	11 699 265
132 DB X-TRACKERS STOXX 600 UTILITIES ETF	ETF	XSBR	LU0292104899	59.640	57.410	-3.7%	12	1 301 577	122	7 132 325
133 DB X-TRACKERS STOXX 600 INSURANCE ETF	ETF	XSIK	LU0292105193	22.600	22.455	-0.6%	32	159 372	173	4 510 157
134 DB X-TRACKERS STOXX 600 FOOD & BEVERAGE	ETF	XS3R	LU0292105359	51.110	52.860	3.4%	36	819 906	315	13 147 193
135 DB X-TRACKERS STOXX 600 INDUSTRIAL GOODS	ETF	XSNR	LU0292106084	41.040	41.365	0.8%	55	5 099 305	320	21 890 883
136 DB X-TRACKERS SHORTDAX DAILY ETF	ETFS	XSDX	LU0292106241	64.250	63.920	-0.5%	1 367	108 754 345	8 404	533 346 633
137 DB X-TRACKERS DBLCl - OY BALANCED ETF	ETF	XDBC	LU0292106167	26.330	25.820	-1.9%	59	687 440	474	11 028 360
138 DB X-TRACKERS EURO STOXX 50 SHORT DAILY	ETFS	XSSX	LU0292106753	36.900	37.010	0.3%	2 606	130 261 533	17 142	701 888 830
139 LYXOR ETF MSCI EM LATIN AMERICA (A)	ETF	LATAM	FR0010410266	30.440	30.705	0.9%	517	9 768 119	3 935	58 082 868
140 LYXOR ETF FTSE RAFI US 1000 (A)	ETF	RUSA	FR0010400804	40.400	38.425	-4.9%	149	2 943 946	808	19 994 102
141 LYXOR ETF FTSE RAFI EUROPE	ETF	REU	FR0010400770	42.790	41.930	-2.0%	17	1 040 948	185	2 148 321
142 LYXOR ETF EUROMTS 15+Y	ETF	EM15	FR0010481093	124.340	123.280	-0.9%	86	2 529 001	574	23 217 781
143 LYXOR ETF DAXPLUS PROTECTIVE PUT	ETFS	DAXPUT	LU0288030280	37.810	38.165	0.9%	13	114 563	168	1 655 908
144 LYXOR ETF EURO STOXX 50 DAILY LEVERAGE	ETF	DJLEV	FR0010468983	14.420	14.080	-2.4%	4 057	59 164 097	24 693	492 028 683
145 LYXOR ETF SOUTH AFRICA FTSE JSE TOP40 (A)	ETF	SAFRI	FR0010464446	25.790	24.995	-3.1%	793	10 572 993	6 799	77 846 365
146 LYXOR ETF MSCI TAIWAN (B)	ETF	TWN	FR0010444796	6.770	6.580	-2.8%	81	1 138 514	885	14 601 179
147 LYXOR ETF EURO CASH	ETF	LEONIA	FR0010510800	105.760	105.790	0.0%	1 611	88 665 455	10 968	762 555 968
148 JPMORGAN ETF FBI EMI	ETF	JGBEUG	FR0010476515	118.050	117.130	-0.8%	16	137 543	153	31 635 225
149 POWERSHARES FTSE RAFI DEVELOPED 1000	ETF	PXF	IE00B23D8W74	8.725	8.390	-3.8%	21	151 852	168	1 918 022
150 POWERSHARES FTSE RAFI EUROPE FUND	ETF	PEF	IE00B23D8X81	6.940	6.765	-2.5%	18	5 171 354	142	8 596 630
151 POWERSHARES FTSE RAFI SWITZERLAND FUND	ETF	PDI	IE00B23LNR19	6.710	6.830	1.8%	12	165 161	81	857 994
152 POWERSHARES FTSE RAFI EMERGING MARKETS	ETF	PEH	IE00B23D9570	6.885	6.885	0.0%	64	348 913	487	4 003 829
153 POWERSHARES FTSE RAFI ASIA PACIF EX-JAP	ETF	PFA	IE00B23D9463	4.588	4.580	-0.2%	17	81 698	176	852 757
154 POWERSHARES FTSE RAFI EUROPE MID-SMALL	ETF	PWD	IE00B23D8Y98	7.985	7.795	-2.4%	15	1 151 082	105	1 491 840
155 POWERSHARES DYNAMIC US MARKET FUND	ETF	PWC	IE00B23D9240	5.875	5.550	-5.5%	9	16 003	87	238 804
156 POWERSHARES GLOBAL CLEAN ENERGY FUND	ETF	PBW	IE00B23D9133	4.900	4.673	-4.6%	107	1 527 444	876	5 745 671
157 POWERSHARES GLOBAL LISTED PRIVATE EQUITY	ETF	PSP	IE00B23D8Z06	5.390	5.090	-5.6%	10	34 414	97	812 580
158 POWERSHARES PALISADES GLOBAL WATER FUND	ETF	PIO	IE00B23D9026	7.455	7.315	-1.9%	49	282 824	555	2 665 610
159 POWERSHARES FTSE RAFI US 1000 FUND	ETF	PFT	IE00B23D8S39	6.610	6.230	-5.7%	67	535 949	459	7 077 385
160 POWERSHARES FTSE RAFI ITALY 30 FUND	ETF	PTI	IE00B23LNP94	5.350	5.160	-3.6%	24	852 779	113	3 419 284
161 DB X-TRACKERS II IBOXX SOVER EUROZONE	ETF	XGLE	LU0290355717	169.700	168.420	-0.8%	5	69 361	86	10 506 643
162 DB X-TRACKERS II IBOXX SOVER EUROZ 1-3	ETF	X13E	LU0290356871	154.140	153.610	-0.3%	106	4 210 825	747	22 259 179
163 DB X-TRACKERS II ITRX CROSSOVER 5-Y ETF	ETF	XTXC	LU0290359032	109.640	108.900	-0.7%	17	243 236	115	3 432 173
164 DB X-TRACKERS II IBOXX SOVER EUROZ 3-5	ETF	X35E	LU0290356954	166.810	166.000	-0.5%	27	2 460 830	280	14 651 930
165 DB X-TRACKERS II ITRAXX HIVOL 5-YEAR ETF	ETF	XTXH	LU0290358737	108.470	107.710	-0.7%	5	324 374	22	753 645
166 DB X-TRACKERS II ITRAXX EUROP 5-YEAR ETF	ETF	XTXE	LU0290358653	105.860	105.350	-0.5%	35	7 617 486	65	10 616 004
167 DB X-TRACKERS II IBOXX SOVER EUROZ 5-7	ETF	X57E	LU0290357176	175.420	173.870	-0.9%	11	123 608	77	1 804 719
168 DB X-TRACKERS II EURO TRIA (1C)	ETF	XEON	LU0290358497	138.312	138.336	0.0%	443	23 870 306	3 299	176 640 324
169 DB X-TRACKERS II IBX EURO INFLATION-LINK	ETF	XEIN	LU0290358224	169.620	166.190	-2.0%	30	1 501 303	258	9 610 612
170 DB X-TRACKERS II IBOXX SOVER EUROZ 7-10	ETF	X710	LU0290357259	177.240	175.240	-1.1%	29	897 598	146	26 682 762
171 DB X-TRACKERS II IBX GLOB INFLATION-LINK	ETF	XGIN	LU0290357929	167.570	167.740	0.1%	58	674 580	398	12 962 212
172 DB X-TRACKERS II IBOXX SOVER EUROZ 10-15	ETF	X105	LU0290357333	176.730	173.340	-1.9%	35	804 538	152	7 403 562
173 DB X-TRACKERS II IBOXX SOVER EUROZ 15+	ETF	X15E	LU0290357507	186.110	184.820	-0.7%	12	305 037	82	10 534 699
174 DB X-TRACKERS II IBOXX SOVER EUROZ 25+	ETF	X25E	LU0290357846	185.000	183.350	-0.9%	8	71 078	66	8 820 344
175 ISHARES FTSE EPRA/NAREIT UK PROPERTY	ETF	IUKP	IE00B1TXLS18	4.103	4.023	-2.0%	60	1 377 837	728	7 343 356
176 ISHARES S&P LISTED PRIVATE EQUITY	ETF	IPRV	IE00B1TXHL60	9.655	9.185	-4.9%	121	858 039	1 141	8 282 491
177 ISHARES S&P GLOBAL WATER	ETF	IH2O	IE00B1TXK627	16.080	15.970	-0.7%	166	1 261 071	1 604	17 314 989
178 ISHARES FTSE BRIC 50	ETF	BR50	IE00B11W57M07	22.100	21.900	-0.9%	2 263	56 952 882	23 444	316 928 798
179 DB X-TRACKERS S&P 500 INVERSE DAILY ETF	ETFS	XSPS	LU0322251520	43.940	45.340	3.2%	755	38 999 882	4 266	161 567 005
180 DB X-TRACKERS MSCI RUSSIA CAPED ETF	ETF	XMRC	LU0322252502	21.540	20.770	-3.6%	299	13 641 542	2 211	68 462 105
181 DB X-TRACKERS FTSE VIETNAM ETF	ETF	XVFT	LU0322252924	34.170	34.425	0.7%	359	2 920 721	4 002	36 744 749
182 DB X-TRACKERS STOXX600 BANKS SHORT DAILY	ETFS	XSTS	LU0322249037	34.080	33.820	-0.8%	1 755	59 957 846	10 050	278 372 675
183 DB X-TRACKERS STOXX 600 HEALTH SHT DAILY	ETFS	XSDS	LU0322249466	40.780	39.140	-4.0%	7	7 312	89	5 317 148
184 DB X-TRACKERS STOXX600 OIL&GAS SHT DAILY	ETFS	XSES	LU0322249623	26.660	26.695	7.6%	18	276 425	180	9 910 218
185 DB X-TRACKERS STOXX 600 TECH SHORT DAILY	ETFS	XSS8	LU0322250043	24.720	24.905	0.7%	9	389 689	78	3 056 315
186 DB X-TRACKERS STOXX600 TELECOM SHT DAILY	ETFS	XSKS	LU0322250126	29.350	28.420	-3.2%	13	327 053	95	6 439 590
187 DB X-TRACKERS LPX MM PRIVATE EQUITY ETF	ETF	XLPE	LU0322250712	19.820	19.210	-3.1%	22	406 672	319	4 102 447
188 DB X-TRACKERS S&P GLOBAL INFRASTRUCTURE	ETF	XSGI	LU0322253229	19.120	19.175	0.3%	18	814 306	356	12 563 487
189 DB X-TRACKERS MSCI EUROPE MID CAP ETF	ETF	XEUM	LU0322253732	46.130	45.985	-0.3%	1	2 443	41	3 677 400
190 DB X-TRACKERS MSCI EUROPE SMALL CAP ETF	ETF	XXSC	LU0322253906	16.340	16.145	-1.2%	19	3 059 696	180	13 409 984
191 DB X-TRACKERS FTSE 100 SHORT DAILY ETF	ETFS	XUKS	LU0328473581	11.060	11.915	7.7%	302	36 277 715	1 069	71 688 758
192 DB X-TRACKERS S&P/ASX 200 ETF	ETF	XAUS	LU0328474803	21.150	20.835	-1.5%	269	6 513 809	2 167	48 479 947
193 DB X-TRACKERS S&P SELECT FRONTIER ETF	ETF	XSFR	LU03284							

ANDAMENTO PRINCIPALI INDICATORI

Denominazione	TIPO	Codice alfab.	ISIN	Prezzo di Riferimento			Scambi nel mese		Scambi nel periodo	
				31/05/2010	30/06/2010	variaz. %	Contratti	Controv. €	GEN - GIU 2010	
				euro	euro				Contratti	Controv. €
201 DB X-TRACKERS II SONIA TRI ETF	ETF	XSTR	LU0321464652	219.100	225.890	3.1%	36	374 371	199	7 197 633
202 LYXOR ETF NEW ENERGY (A)	ETF	ENER	FR0010524777	19.020	18.510	-2.7%	386	4 925 441	3 767	25 184 410
203 LYXOR ETF WORLD WATER (A)	ETF	WAT	FR0010527275	15.680	15.815	0.9%	250	1 362 731	1 909	12 486 489
204 LYXOR ETF WISE QUANTITATIVE STRATEGY	ETF	WISE	FR0010540690	6.925	6.760	-2.4%	23	100 492	155	516 983
205 MARKET ACCESS JIM ROGERS INT COMMODITY	ETF	RICI	LU0249326488	22.890	22.830	-0.3%	17	174 376	163	3 218 727
206 MARKET ACCESS RICCI - M INDEX FUND	ETF	RICIME	LU0259320728	118.600	114.450	-3.5%	29	122 889	399	6 155 531
207 MARKET ACCESS RICCI - A INDEX FUND	ETF	RICIAG	LU0259321452	81.980	82.660	0.8%	30	303 051	209	5 174 466
208 MARKET ACCESS NYSE ARCA GOLD BUGS FUND	ETF	GOLDA	LU0259322260	154.370	161.550	4.7%	169	5 543 565	1 160	24 143 579
209 MARKET ACCESS DAXGLOBAL ASIA INDEX FUND	ETF	ASIADX	LU0259323235	33.390	34.070	2.0%	86	1 461 172	281	5 356 967
210 MARKET ACCESS SOUTH-EAST EUROPE TRADED	ETF	SUDEUR	LU0259329869	11.770	11.245	-4.5%	10	67 460	133	645 862
211 MARKET ACCESS DOW JONES TURKEY TITANS 20	ETF	TURK	LU0269999362	152.150	155.130	2.0%	70	1 813 919	545	16 285 097
212 MARKET ACCESS DAXGLOBAL BRIC INDEX FUND	ETF	BRICDX	LU0269999792	46.060	46.010	-0.1%	135	1 026 652	1 145	28 098 208
213 MARKET ACCESS DAXGLOBAL RUSSIA INDEX	ETF	RUSSDX	LU0269999558	42.950	40.620	-5.4%	130	821 718	2 163	27 677 440
214 MARKET ACCESS FTSE/JSE AFRICA TOP 40	ETF	AFRI	LU0270000028	27.160	26.180	-3.6%	91	2 625 715	678	13 400 088
215 ISHARES DAX	ETF	EXS1	DE0005933931	55.140	55.270	0.2%	887	105 767 011	5 174	526 637 721
216 ISHARES DOW JONES-UBS COMMODITY SWAP	ETF	EXXY	DE000A0H0728	27.290	27.275	-0.1%	20	186 883	104	14 984 981
217 ISHARES DJ STOXX EU ENLARGED 15	ETF	EXSJ	DE000A0D8015	21.940	20.360	-7.2%	4	1 877	87	3 777 895
218 ISHARES DJ EURO STOXX SUSTAINABILITY 40	ETF	EXXV	DE000A0F5U3G	9.225	8.900	-3.5%	14	45 475	45	625 151
219 ISHARES EB.REXX JUMBO PFANDBRIEF	ETF	EXHE	DE0002632655	109.900	107.620	-1.2%	76	785 607	498	12 374 790
220 ISHARES DJ EURO STOXX	ETF	EXSI	DE000A0D8007	25.750	25.090	-2.6%	29	915 990	280	11 981 909
221 ISHARES DJ STOXX 600 UTILITIES SWAP	ETF	EXXS	DE000A0F5UD0	59.920	57.810	-3.5%	3	6 389	56	2 600 628
222 ISHARES DJ STOXX 600	ETF	EXSA	DE0002635307	25.140	24.640	-2.0%	131	18 001 257	650	52 495 176
223 ISHARES DJ STOXX LARGE 200	ETF	EXSC	DE0005933980	26.660	26.000	-2.5%	-	-	25	868 128
224 ISHARES DJ STOXX MID 200	ETF	EXSD	DE0005933998	24.550	24.230	-1.3%	3	59 131	31	155 439
225 ISHARES DJSTXX600 TRAVEL & LEISURE SWAP	ETF	EXXR	DE000A0F5UC2	18.500	18.070	-2.3%	2	5 926	18	268 160
226 ISHARES DJ STOXX SMALL 200	ETF	EXSE	DE000A0D80Z7	15.590	15.140	-2.9%	8	108 961	136	5 849 858
227 ISHARES DJSTXX600 TELECOM SWAP	ETF	EXXQ	DE000A0F5UB4	42.360	43.585	2.9%	1	450	18	93 134
228 ISHARES DJ STOXX 600 TECHNOLOGY SWAP	ETF	EXXP	DE000A0F5UA6	26.110	25.740	-1.4%	3	12 504	61	632 783
229 ISHARES DJ STOXX 600 RETAIL SWAP	ETF	EXXN	DE000A0F5T93	42.030	41.055	-2.3%	2	366 097	7	563 580
230 ISHARES DOW JONES U.S. SELECT DIVIDEND	ETF	EXX5	DE000A0D8049	25.990	25.530	-1.8%	44	111 473	412	3 171 326
231 ISHARES DJ STOXX SELECT DIVIDEND 30	ETF	EXSH	DE0002635299	14.270	14.685	2.9%	21	263 826	218	2 727 933
232 ISHARES DJSTXX600 AUTOMOBIL E PARTS SWAP	ETF	EXXA	DE000A0D8056	35.270	36.230	2.7%	3	4 945	17	198 603
233 ISHARES DJ STOXX 600 BANKS SWAP	ETF	EXXB	DE000A0D8064	36.100	36.010	-0.2%	24	102 487	154	2 256 635
234 ISHARES DJ STOXX 600 BASIC RESOURCE SWAP	ETF	EXXC	DE000A0D8072	83.990	78.730	-6.3%	79	3 083 606	909	15 224 519
235 ISHARES DJ STOXX 600 CHEMICALS SWAP	ETF	EXXD	DE000A0D8080	74.860	77.290	3.2%	16	38 212	100	4 579 254
236 ISHARES DJSTXX600 CONSTR E MATERIAL SWAP	ETF	EXXE	DE000A0F5T02	41.300	40.315	-2.4%	3	44 712	42	866 672
237 ISHARES DJSTXX600 FINANC SERVICES SWAP	ETF	EXXF	DE000A0F5T10	39.200	39.235	0.1%	-	-	15	36 683
238 ISHARES DJSTXX600 FOOD E BEVERAGE SWAP	ETF	EXXG	DE000A0F5T28	50.910	52.770	3.7%	23	938 494	85	2 334 416
239 ISHARES DJ STOXX 600 HEALTH CARE SWAP	ETF	EXXH	DE000A0F5T36	51.790	53.840	4.0%	22	392 289	169	2 064 565
240 ISHARES DJSTXX600 INDUS GOOD E SERV SWAP	ETF	EXXI	DE000A0F5T44	41.020	41.475	1.1%	7	70 234	43	355 555
241 ISHARES DJ STOXX 600 INSURANCE SWAP	ETF	EXXJ	DE000A0F5T51	22.650	22.495	-0.7%	-	-	13	598 206
242 ISHARES DJ STOXX 600 MEDIA SWAP	ETF	EXXK	DE000A0F5T69	24.830	24.830	0.0%	1	10 324	10	304 615
243 ISHARES DJ STOXX 600 OIL E GAS SWAP	ETF	EXXL	DE000A0F5T77	54.760	50.440	-7.9%	18	639 359	184	1 882 211
244 ISHARES DJSTXX600 PERSO E HOUSEHOLD SWAP	ETF	EXXM	DE000A0F5T85	56.620	58.480	3.3%	2	21 697	37	911 772
245 ISHARES FTSE MIB	ETF	IMIB	IE00B1XNH568	11.845	11.605	-2.0%	1 086	36 524 116	5 858	133 637 036
246 ISHARES S&P GLOBAL CLEAN ENERGY	ETF	INRG	IE00B1XNH5C3	7.085	6.930	-2.2%	258	2 276 554	2 589	20 744 429
247 ISHARES MSCI EUROPE	ETF	IMEU	IE00B1YZSC51	15.730	15.470	-1.7%	420	10 334 915	2 191	45 870 773
248 ISHARES S&P TIMBER & FORESTRY	ETF	WOOD	IE00B27YCF74	12.620	12.265	-2.8%	122	2 171 561	966	20 227 900
249 ISHARES MSCI EM LATIN AMERICA	ETF	LTAM	IE00B27YCK28	19.380	19.475	0.5%	238	7 274 578	2 196	40 926 809
250 JPMORGAN ETF GBI EMU 1-3Y	ETF	JGBEU1	FR0010561183	110.920	110.470	-0.4%	8	139 347	84	5 048 172
251 JPMORGAN ETF GBI EMU 3-5Y	ETF	JGBEU2	FR0010561225	115.650	114.970	-0.6%	3	13 323	43	1 721 057
252 JPMORGAN ETF GBI EMU 5-7Y	ETF	JGBEU3	FR0010561241	118.070	117.170	-0.8%	6	527 927	83	9 429 918
253 JPMORGAN ETF GBI EMU 7-10Y	ETF	JGBEU4	FR0010561258	117.530	116.330	-1.0%	2	10 653	51	5 803 729
254 DB X-TRACKERS II EONIA TRI (1D)	ETF	XEOD	FR0033504496	134.249	134.271	0.0%	80	457 419	441	4 484 782
255 LYXOR ETF FTSE 100	ETF	FTS100	FR0010438127	6.340	6.210	-2.1%	158	19 709 966	1 036	108 714 823
256 LYXOR ETF MSCI MALAYSIA (A)	ETF	MAL	FR0010397554	11.860	12.050	1.6%	445	5 024 410	2 075	17 127 393
257 DB X-TRACKERS II SHORT IBOXX SOVER EUROZ	ETF	XSSL	LU0321463258	109.830	110.670	0.8%	136	3 704 955	1 586	42 961 678
258 DB X-TRACKERS II EMERG MKTS LIQUID EURB	ETF	XEMB	LU0321462953	225.420	228.520	1.4%	680	6 114 747	5 068	66 816 883
259 JPMORGAN ETF GBI LOCAL US	ETF	JPMUS	FR0010561365	126.430	128.270	1.5%	5	45 891	46	720 686
260 POWERSHARES EUROMTS CASH 3 MONTHS FUND	ETF	PEU	IE00B3BPC051	101.440	101.120	-0.3%	68	6 454 414	442	63 258 808
261 POWERSHARES MIDDLE EAST NORTH AFRICA	ETF	PSM	IE00B3BPCJ75	9.920	9.230	-7.0%	32	180 637	321	2 553 046
262 POWERSHARES GLOBAL AGRICULTURE FUND	ETF	PSU	IE00B3BQ0418	7.395	7.080	-4.3%	71	677 135	767	7 968 572
263 LYXOR ETF MSCI EMU	ETF	EMU	FR0007085501	33.450	33.095	-1.1%	87	1 913 556	988	53 975 200
264 LYXOR ETF PAN AFRICA (A)	ETF	LAFRI	FR0010636464	11.000	10.815	-1.7%	849	8 925 477	6 900	60 699 692
265 LYXOR ETF MSCI ASIA APEX 50 (A)	ETF	APEX	FR0010652867	58.250	58.080	-0.3%	53	207 177	430	9 161 678
266 LYXOR ETF SHORT STRATEGY EUROPE	ETF	DJS	FR0010589101	82.690	82.250	-0.5%	98	3 640 317	761	14 557 132
267 ETFX DAXGLOBAL SHIPPING FUND	ETF	SHIP	IE00B3CMS880	18.970	18.525	-2.3%	31	896 656	502	10 806 617
268 ETFX RUSSELL 1000 US LARGE CAP FUND	ETF	RONE	IE00B3CNH332	19.540	18.730	-4.1%	8	111 950	92	2 256 070
269 ETFX DAXGLOBAL COAL MINING FUND	ETF	COAL	IE00B3CNHF18	39.720	37.185	-6.4%	65	643 866	728	9 953 870
270 ETFX DAXGLOBAL STEEL FUND	ETF	STEE	IE00B3CNJU02	32.380	29.935	-7.6%	20	60 030	325	3 220 710
271 ETFX DAXGLOBAL GOLD MINING FUND	ETF	AUCO	IE00B3CNHG25	35.740	37.565	5.1%	175	2 580 022	714	12 697 604
272 ETFX DAXGLOBAL ALTERNATIVE ENERGY FUND	ETF	ALTE	IE00B3CNHC86	12.420	12.250	-1.4%	33	241 108	330	3 340 232
273 ETFX DOW JONES STOXX 600 OIL & GAS FUND	ETF	OILG	IE00B3CNH840	16.160	14.930	-7.6%	17	2 383 126	69	4 540 721
274 ETFX DOW JONES STOXX 600 BASIC RESOURCES	ETF	BASR	IE00B3CNH733	24.920	23.365	-6.2%	25	684 075	256	5 654 930
275 ETFX DOW JONES STOXX 600 UTILITIES FUND	ETF	UTIL	IE00B3CNH956	17.470	16.810	-3.8%	7	202 997	22	239 033
276 ETFX JANNEY GLOBAL WATER FUND	ETF	WATE	IE00B3CNHB79	35.700	35.735	0.1%	8	474 996	93	3 569 380
277 ETFX WNA GLOBAL NUCLEAR ENERGY FUND	ETF	NUKE	IE00B3C94706	22.010	21.535	-2.2%	51	347 461	462	3 925 114
278 ETFX S-NET ITG GLOBAL AGRI BUSINESS FUND	ETF	AGRI	IE00B3CNHD93	30.270	29.065	-4.0%	13	208 189	255	4 843 290
279 ETFX RUSSELL 2000 US SMALL CAP FUND	ETF	RTWO	IE00B3CNHJ55	20.760	19.430	-6.4%	134	1 007 612	697	6 902 758
280 DB X-TRACKERS II GLOB SOVER EUR HED ETF	ETF	XGSH	LU0378818131	184.250	185.470	0.7%	23	262 854	106	3 007 319
281 DB X-TRACKERS II ITRX EU SEN FIN 5-Y	ETF	XSN5	LU0378819295	104.600	104.260	-0.3%	3	205 140	29	5 731 949
282 DB X-TRACKERS II ITRX EU SUB FIN 5-Y	ETF	XSB5	LU0378819378	104.170	103.450	-0.7%	1	17 665	13	107 756
283 DB X-TRACKERS II ITRX EU SEN FIN 5-Y SHT	ETF	XSNS	LU0378819709	109.400	109.750	0.3%	4	10 360	28	5 530 808
284 DB X-TRACKERS II ITRX EU SUB FIN 5-Y SHT	ETF	XSBS	LU0378819881	107.850	108.560	0.7%	6	273 024	16	2 058 509
285 LYXOR ETF XBEAR EURO STOXX 50	ETF	BXX	FR0010424143	40.510	40.540	0.1%	2 667	58 509 891	13 874	443 943 437
286 DB X-TRACKERS EURO STOXX 50 ETF (1C)	ETF	XESC	LU0380865021	28.050	27.825	-0.8%	339	58 248 077	1 550	260 681 598
287 DB X-TRACKERS MSCI AC ASIA EX JAPAN ETF	ETF	XAXJ	LU0322252171	21.510	21.915	1.9%	173	8 188 436	1 214	79 650 074
288 DB X-TRACKERS MSCI PACIFIC EX JAPAN ETF	ETF	XPXJ	LU0322252338	27.600	27.535	-0.2%	178	9 126 554	1 209	56 837 049
289 DB X-TRACKERS RUSSELL 2000 ETF	ETF	XRU2	LU0322248658	69.070	64.720	-6.3%	89	2 699 665	853	46 332 339
290 DB X-TRACKERS STOXX 600 ETF	ETF	XSX6	LU0322847592	40.430	40.225	-0.5%	19	342 818	184	9 776 397
291 DB X-TRACKERS CAC 40 ETF	ETF	XCAC	LU0322250985	36.320	35.935	-1.1%	180	17 012 246	984	93 667 983
292 DB X-TRACKERS CAC 40 SHORT DAILY ETF	ETF	XC4S	LU0322251280	63.080	63.430	0.6%	211	16 521 898	857	65 751 176
293 ISHARES S&P EMERGING MKTS INFRASTRUCTURE	ETF	IEMI	IE00B2NPL135	16.050	16.240	1.2%	199	1 664 279	2 399	19 443 895
294 ISHARES MARKIT IBOXX EURO COVERED BOND	ETF	ICOV	IE00B3880275	138.200	137.780	-0.3%	19	764 193	259	6 746 618
295 ISHARES EB.REXX EURO MONEY MARKET (DE)	ETF	EXVM	DE000A0Q4R29	93.440	93.430	0.0%	23	314 148	230	37 144 587
296 DB X-TRACKERS EURO STOXX50 LEV DAILY ETF										

ANDAMENTO PRINCIPALI INDICATORI

Denominazione	TIPO	Codice alfab.	ISIN	Prezzo di Riferimento			Scambi nel mese		Scambi nel periodo	
				31/05/2010	30/06/2010	variaz. %	Contratti	Controv. €	GEN - GIU 2010	
				euro	euro				Contratti	Controv. €
301 DB X-TRACKERS MSCI PAN-EURO TRN ETF	ETF	XMPE	LU0412624271	10.870	10.805	-0.6%	1	40 950	17	633 904
302 LYXOR ETF EURO CORPORATE BOND (A)	ETF	CRPE	FR0010737544	114.310	114.460	0.1%	1 009	19 288 128	6 331	178 804 424
303 ISHARES BARCAP EURO AGGREGATE BOND	ETF	IEAG	IE0033DKXQ41	106.050	105.350	-0.7%	59	401 984	379	11 705 386
304 ISHARES BARCAP EURO CORPORATE BOND	ETF	IEAC	IE0033F81R35	115.320	115.270	0.0%	120	5 493 859	814	38 833 158
305 ISHARES BARCAP EURO TREASURY BOND 0-1	ETF	IEGE	IE0033FH7618	100.360	100.200	-0.2%	8	3 603 175	100	25 202 151
306 EASYETF EURO STOXX 50 (B1 C)	ETF	ETD	FR0010129072	31.260	30.920	-1.1%	17	5 682 852	55	12 751 459
307 EASYETF BNP PARIBAS NEXT 11 EMERGING	ETF	E11EUR	FR0010616656	96.180	96.340	0.2%	65	1 228 213	338	4 160 037
308 EASYETF S&P 500	ETF	ESEEUR	FR0010616300	41.640	40.065	-3.8%	8	68 735	70	2 044 883
309 EASYETF DJ SOUTH KOREA TITANS 30	ETF	EEKEUR	FR0010636530	21.140	21.450	1.5%	5	8 183	97	3 906 690
310 EASYETF FTSE XINHUA CHINA 25	ETF	EXCEUR	FR0010636589	144.840	148.150	2.3%	21	155 988	183	1 865 938
311 EASYETF SOUTH AFRICA FTSE/JSE TOP 40	ETF	EEAEUR	FR0010636571	28.520	27.520	-3.5%	26	206 266	257	4 118 677
312 EASYETF EURO STOXX 50 DOUBLE SHORT DAILY	ETFS	EZD	FR0010689695	27.555	27.575	0.1%	337	5 000 274	1 755	18 270 461
313 EASYETF EUROMTS EONIA	ETF	EONEUR	FR0010616268	138.535	138.570	0.0%	2	68 858	8	214 093
314 CS ETF (IE) ON IBOXX USD INFLATION (B)	ETF	CSBILU	IE0033VTP597	89.030	89.820	0.9%	33	278 041	103	4 515 753
315 CS ETF (IE) ON IBOXX USD GOVT 7-10 (B)	ETF	CSBGU0	IE0033VWN518	86.740	89.240	2.9%	16	896 573	75	2 913 710
316 CS ETF (IE) ON IBOXX USD GOVT 3-7 (B)	ETF	CSBGU7	IE0033VWN393	85.330	86.890	1.8%	23	209 025	131	11 092 955
317 CS ETF (IE) ON IBOXX USD GOVT 1-3 (B)	ETF	CSBGU3	IE0033VWN179	82.880	83.290	0.5%	60	9 393 376	186	24 734 967
318 CS ETF (IE) ON IBOXX EUR INFLATION (B)	ETF	CSBILE	IE0033VTQ640	106.610	105.200	-1.3%	4	343 333	44	5 886 761
319 CS ETF (IE) ON IBOXX EUR GOVT 7-10 (B)	ETF	CSBGE0	IE0033VTN290	108.060	107.510	-0.5%	6	732 004	75	13 936 959
320 CS ETF (IE) ON IBOXX EUR GOVT 3-7 (B)	ETF	CSBGE7	IE0033VTML14	105.400	105.070	-0.3%	43	668 848	269	12 854 383
321 CS ETF (IE) ON IBOXX EUR GOVT 1-3 (B)	ETF	CSBGE3	IE0033VTMJ91	101.900	101.710	-0.2%	5	736 326	33	9 927 465
322 CS ETF (IE) ON MSCI JAPAN SMALL CAP (B)	ETF	CSJPS	IE0033VWMK93	72.000	72.040	0.1%	7	89 082	46	1 241 866
323 CS ETF (LUX) ON MSCI EMU LARGE CAP	ETF	CSEMUL	LU0154139132	81.320	78.950	-2.9%	8	1 331 947	322	13 376 367
324 CS ETF (LUX) ON MSCI EMERGING MARKETS	ETF	CSEM	LU0254097446	75.520	75.700	0.2%	70	9 200 763	468	48 489 790
325 CS ETF (IE) ON MSCI EMU SMALL CAP (B)	ETF	CSEMUS	IE0033VWMM18	79.200	77.860	-1.7%	17	440 135	169	4 839 082
326 CS ETF (IE) ON MSCI UK LARGE CAP (B)	ETF	CSUKL	IE0033VWKZ07	83.950	81.810	-2.5%	-	-	1	42 435
327 CS ETF (IE) ON MSCI UK SMALL CAP (B)	ETF	CSUKS	IE0033VWLG82	93.490	94.270	0.8%	1	2 856	3	4 524
328 CS ETF (IE) ON MSCI USA LARGE CAP (B)	ETF	CSUSL	IE0033VWLJ14	84.150	80.720	-4.1%	25	481 686	240	4 180 541
329 CS ETF (IE) ON MSCI USA SMALL CAP (B)	ETF	CSUSS	IE0033VWMM098	98.400	91.730	-6.8%	81	1 198 413	337	4 540 724
330 CS ETF (IE) ON MSCI JAPAN LARGE CAP (B)	ETF	CSJPL	IE0033VWM213	73.640	71.940	-2.3%	54	1 120 909	391	10 847 643
331 DB X-TRACKERS STX600 BASRESOUR SHT DAILY	ETFS	XBRIS	LU0412624354	10.210	10.730	5.1%	15	430 031	179	4 074 097
332 DB X-TRACKERS STX600 INDUSTR G SHT DAILY	ETFS	XIGS	LU0412624511	46.250	45.505	-1.6%	1	882	26	2 464 760
333 DB X-TRACKERS STX600 INSURANCE SHT DAILY	ETFS	XSIS	LU0412624602	47.240	47.320	0.2%	11	942 659	94	13 863 285
334 DB X-TRACKERS STX600 UTILITIES SHT DAILY	ETFS	XS6S	LU0412624867	37.930	39.130	3.2%	10	189 328	39	2 578 353
335 DB X-TRACKERS HSI SHORT DAILY ETF (2C)	ETFS	XHSS	LU0429790313	13.070	12.790	-2.1%	17	76 983	210	3 443 060
336 DB X-TRACKERS COMM BOOSTER DJ-UBSCI (2C)	ETF	XCBE	LU0429790743	24.840	24.455	-1.5%	19	1 636 248	58	4 944 147
337 ETFX DJ EURO STOXX 50 LEVERAGED (2X)	ETFS	LEU2	IE00084QNJG91	97.990	95.140	-2.9%	166	2 357 995	679	14 007 392
338 ETFX DJ EURO STOXX 50 DOUBLE SHORT (2X)	ETFS	SEU2	IE00084QNJ141	69.820	69.380	-0.6%	187	1 782 222	616	8 258 529
339 ISHARES MSCI EMERGING MARKETS (ACC)	ETF	SEMA	IE00B4L5YC18	20.640	20.655	0.1%	70	8 433 872	303	18 928 408
340 ISHARES MSCI JAPAN (ACC)	ETF	SJPA	IE00B4L5YX21	19.290	18.845	-2.3%	2	39	40	1 709 928
341 ISHARES MSCI EUROPE (ACC)	ETF	SMEA	IE00B4K48X80	26.020	25.875	-0.6%	51	4 405 347	143	13 471 560
342 ISHARES BARCAP EURO CORPORATE BOND 1-5	ETF	SE15	IE00B4L60045	101.960	102.450	0.5%	36	815 647	264	5 894 927
343 ISHARES BARCAP EURO TREASURY BOND	ETF	SEGA	IE00B4WJXJ64	103.740	102.630	-1.1%	7	6 161 800	58	18 161 787
344 ISHARES BARCAP EURO GOVERNMENT BOND 10-15	ETF	IBGZ	IE00B4WJXJH41	132.530	131.790	-0.6%	12	835 889	79	6 479 236
345 ISHARES BARCAP EURO GOVERNMENT BOND 5-7	ETF	IBGY	IE00B4WJXJG34	131.280	131.260	0.0%	8	2 918 571	39	5 910 452
346 ISHARES MSCI PACIFIC EX-JAPAN	ETF	SPXJ	IE00B4WJXD03	27.760	27.455	-1.1%	28	3 194 368	201	7 693 890
347 ISHARES S&P 500 (ACC)	ETF	SACC	IE00B4L5ZD99	21.380	20.510	-4.1%	29	1 136 446	169	3 754 100
348 ISHARES MSCI WORLD (ACC)	ETF	SWDA	IE00B4L5Y983	19.520	19.005	-2.6%	7	226 584	37	527 511
349 ETFX DAX 2X LONG FUND	ETFS	DEL2	IE00B4YNNH68	114.650	114.560	-0.1%	138	1 982 472	479	12 122 456
350 ETFX DAX 2X SHORT FUND	ETFS	DES2	IE00B4YNNZ41	62.620	61.720	-1.4%	309	4 175 325	1 153	15 166 872
351 AMUNDI ETF DOW JONES EURO STOXX 50	ETF	C50	FR0010654913	42.400	42.005	-0.9%	1 216	11 443 773	4 236	49 043 826
352 AMUNDI ETF LEVERAGED DJ EURO STOXX 50	ETFS	CSL	FR0010756072	144.250	140.550	-2.6%	658	5 582 237	2 232	25 527 057
353 AMUNDI ETF LEVERAGED MSCI EUROPE DAILY	ETFS	CLEV	FR0010756080	349.780	344.520	-1.5%	5	12 146	33	5 408 002
354 AMUNDI ETF LEVERAGED MSCI USA DAILY	ETFS	CL2	FR0010755611	225.600	206.460	-8.5%	220	15 042 099	664	21 874 439
355 AMUNDI ETF MSCI CHINA	ETF	CC1	FR0010713784	204.760	206.930	1.1%	123	3 488 550	507	13 315 463
356 AMUNDI ETF MSCI EASTERN EUROPE EX RUSSIA	ETF	CE9	FR0010717074	247.380	230.990	-6.6%	6	27 390	25	106 139
357 AMUNDI ETF MSCI EMU	ETF	CMU	FR0010655688	105.740	104.600	-1.1%	5	236 837	24	4 480 107
358 AMUNDI ETF MSCI EUROPE	ETF	CEU	FR0010655696	113.000	112.300	-0.6%	9	1 619 643	38	10 004 321
359 AMUNDI ETF MSCI INDIA	ETF	CI2	FR0010713727	373.200	392.260	5.1%	56	3 296 305	213	9 494 956
360 AMUNDI ETF MSCI ITALY	ETF	CI1	FR0010655720	78.440	77.910	-0.7%	4	42 091	38	1 120 749
361 AMUNDI ETF MSCI PACIFIC EX JAPAN	ETF	CP9	FR0010713669	276.210	275.730	-0.2%	36	2 128 508	70	3 748 690
362 AMUNDI ETF MSCI USA	ETF	CU2	FR0010688275	94.940	91.080	-4.1%	18	1 260 325	35	2 202 504
363 AMUNDI ETF SHORT DOW JONES EURO STOXX 50	ETFS	CS5	FR0010757781	37.990	38.130	0.4%	251	982 156	408	2 195 441
364 AMUNDI ETF SHORT MSCI EUROPE DAILY	ETFS	CBE	FR0010791186	62.460	62.400	-0.7%	18	224 346	70	2 012 360
365 AMUNDI ETF SHORT MSCI USA DAILY	ETFS	C2U	FR0010791194	81.610	84.800	3.9%	10	1 232 353	51	1 959 497
366 LYXOR ETF EUROMTS AAA GOVERNMENT BOND	ETF	EMAAA	FR0010820258	110.360	110.370	0.0%	800	46 613 420	2 732	140 938 061
367 LYXOR ETF EUR CORP BOND EX FINANCIAL (A)	ETF	CBEF	FR0010814236	104.950	105.320	0.4%	223	5 607 548	992	18 684 374
368 CS ETF (IE) ON EURO STOXX 50	ETF	CSSX5E	IE00B53L3W79	61.300	60.670	-1.0%	39	2 313 660	7	2 503 264
369 CS ETF (IE) ON DOW JONES IND AVERAGE	ETF	CSINDU	IE00B53L4350	77.400	75.630	-2.3%	80	2 333 860	47	4 904 634
370 CS ETF (IE) ON NASDAQ 100	ETF	CSNDX	IE00B53ZB191	79.740	75.760	-5.0%	7	30 190	14	123 169
371 CS ETF (IE) ON FTSE 100	ETF	CSUKX	IE00B53HP851	70.950	69.630	-1.9%	-	-	4	43 596
372 CS ETF (IE) ON FTSE MIB	ETF	CSMIB	IE00B53L4X51	57.940	57.630	-0.5%	83	12 997 613	192	21 688 470
373 CS ETF (IE) ON NIKKEI 225	ETF	CSNKY	IE00B52MJD48	73.620	72.570	-1.4%	5	19 581	17	399 290
374 CS ETF (IE) ON MSCI PACIFIC EX JAPAN	ETF	CSPXJ	IE00B52MJY50	66.150	65.930	-0.3%	11	1 520 198	73	7 658 228
375 CS ETF (IE) ON MSCI CANADA	ETF	CSCA	IE00B525F786	81.270	77.730	-4.4%	155	6 930 557	466	15 802 444
376 CS ETF (IE) ON MSCI UK	ETF	CSUK	IE00B539F030	68.030	66.740	-1.9%	-	-	-	-
377 CS ETF (IE) ON MSCI USA	ETF	CSUS	IE00B525FT06	74.370	71.440	-3.9%	-	-	5	68 659
378 CS ETF (IE) ON MSCI JAPAN	ETF	CSJP	IE00B53QDK08	71.310	69.780	-2.1%	7	482 302	38	3 405 422
379 CS ETF (IE) ON MSCI EUROPE	ETF	CSEU	IE00B53QFR17	62.930	62.800	-0.2%	-	-	-	-
380 CS ETF (IE) ON MSCI EMU	ETF	CSEMU	IE00B53QGS62	59.680	59.330	-1.1%	5	332 170	11	1 213 916
381 ISHARES EURO STOXX 50 (ACC)	ETF	IEUA	IE00B4L5YV07	23.280	23.050	-1.0%	37	8 049 275	96	19 019 304
382 LYXOR ETF MSCI EUROPE REAL ESTATE (A)	ETF	REEU	FR0010833558	23.450	23.545	0.4%	21	48 287	293	1 391 082
383 LYXOR ETF MSCI USA REAL ESTATE (A)	ETF	REUSA	FR0010833566	24.970	24.390	-2.3%	129	2 053 406	903	11 077 765
384 LYXOR ETF MSCI ASIA EXJPN REAL ESTAT (A)	ETF	REASIA	FR0010833541	8.115	8.350	2.9%	64	870 341	405	3 313 343
385 LYXOR ETF MSCI WORLD REAL ESTATE (A)	ETF	REWLD	FR0010833574	25.950	25.745	-0.8%	49	431 390	455	4 403 351
386 POWERSHARES FTSE RAFI HONG KONG CHINA	ETF	PRH	IE00B38PCC45	13.370	13.440	0.5%	11	32 201	33	82 937
387 AMUNDI ETF MSCI EUROPE BANKS	ETF	CB5	FR0010688176	75.440	75.230	-0.3%	3	5 183	5	35 209
388 AMUNDI ETF MSCI EUROPE CONSUM DISCRETION	ETF	CD6	FR0010688184	83.420	84.470	1.3%	1	2 935	3	6 729
389 AMUNDI ETF MSCI EUROPE CONSUMER STAPLES	ETF	CS5	FR0010688168	148.660	153.220	3.1%	1	9 913	1	9 913
390 AMUNDI ETF MSCI EUROPE HEALTHCARE	ETF	CH5	FR0010688192	96.560	100.220	3.8%	2	12 939	4	19 696
391 AMUNDI ETF MSCI EUROPE INDUSTRIALS	ETF	CIN	FR0010688218	143.460	143.910	0.3%	1	722	4	2 145
392 AMUNDI ETF MSCI EUROPE IT	ETF	CI6	FR0010713768	44.570	44.115	-1.0%	-	-	-	-
393 AMUNDI ETF MSCI EUROPE MATERIALS	ETF	CBM	FR0010791137	221.960	216.130	-2.6%	-	-	4	734 593
394 AMUNDI ETF MSCI EUROPE TELECOM SERVICES	ETF	CT5	FR0010713735	68.720	70.510	2.6%	-	-	-	-
395 AMUNDI ETF MSCI EUROPE UTILITIES	ETF	CU5	FR0010688234	133.930	129.100	-3.6%	1	9 479	1	9 479
396 AMUNDI ETF MSCI WORLD ENERGY	ETF	CWE	FR0010791145	201.680	189.860	-5.9%	7	76 870	21	425 215
397 AMUNDI ETF MSCI WORLD FINANCIALS										

ANDAMENTO PRINCIPALI INDICATORI

Denominazione	TIPO	Codice alfab.	ISIN	Prezzo di Riferimento			Scambi nel mese		Scambi nel periodo	
				31/05/2010	30/06/2010	variaz. %	Contratti	Controv. €	Contratti	Controv. €
				euro	euro					
401 DB X-TRACKERS FTSE100 LEV DAILY ETF	ETFS	XUL2	LU0412625088	8.620	8.035	-6.8%	4	96 973	22	710 531
402 DB X-TRACKERS S&P500 2XINVERSE DAILY ETF	ETFS	XT21	LU0411078636	24.550	26.150	6.5%	119	3 463 693	356	8 908 479
403 DB X-TRACKERS EURSTX50 DOUBSHRT DAI ETF	ETFS	XEDS	LU0417510616	29.230	29.175	-0.2%	69	1 169 389	154	3 189 095
404 AMUNDI ETF COMMODITIES S&P GSCI (LE)	ETF	CL7	FR0010821728	228.060	227.440	-0.3%	-	-	2	1 640
405 AMUNDI ETF COMMODIT S&P GSCI AGRICULTURE	ETF	CA8	FR0010821736	49.540	50.620	2.2%	9	35 195	18	131 190
406 AMUNDI ETF COMMODITIES S&P GSCI METALS	ETF	CMEV	FR0010821744	221.170	211.120	-4.5%	6	81 559	15	546 439
407 AMUNDI ETF COMMODIT S&P GSCI NON ENERGY	ETF	NEG	FR0010821777	168.970	167.630	-0.8%	1	16 876	4	36 270
408 AMUNDI ETF EURO CORPORATES	ETF	CC4	FR0010754119	167.750	168.080	0.2%	78	684 159	94	846 609
409 AMUNDI ETF EURO INFLATION	ETF	CI3	FR0010754127	171.200	168.280	-1.7%	6	84 426	18	386 766
410 AMUNDI ETF MSCI BRAZIL	ETF	BRZ	FR0010821793	49.740	49.390	-0.7%	44	1 706 021	68	2 458 336
411 AMUNDI ETF MSCI EUROPE EX EMU	ETF	CU9	FR0010821819	120.050	119.760	-0.2%	3	285 494	26	1 676 310
412 AMUNDI ETF MSCI WORLD EX EMU	ETF	CM9	FR0010756114	109.410	106.130	-3.0%	7	550 398	24	2 623 839
413 AMUNDI ETF SHORT GOVT BOND EUROMTS 3-10	ETFS	S80	FR0010821850	110.080	110.910	0.8%	1	1 113	8	20 710
414 AMUNDI ETF SHORT GOVT BOND EUROMTS 10-15	ETFS	S10	FR0010823385	102.630	104.570	1.9%	19	158 896	52	16 524 695
415 AMUNDI ETF SHORT GOVT BOND EUROMTS 1-3	ETFS	S13	FR0010821876	122.750	123.160	0.3%	5	22 028	13	43 064
416 AMUNDI ETF SHORT GOVT BOND EUROMTS 3-5	ETFS	S35	FR0010823401	113.100	113.600	0.4%	3	29 163	12	95 954
417 AMUNDI ETF SHORT GOVT BOND EUROMTS 5-7	ETFS	S58	FR0010823443	107.500	108.400	0.8%	4	8 329	6	10 268
418 AMUNDI ETF SHORT GOVT BOND EUROMTS 7-10	ETFS	S71	FR0010823450	105.530	106.840	1.2%	8	34 111	28	168 348
419 CS ETF (IE) ON S&P 500	ETF	CSSPX	IE00058MR087	75.490	72.220	-4.3%	17	49 090	20	60 083
420 ETFX FTSE MIB LEVERAGED (2X) FUND	ETFS	ITL2	IE00048V5WD83	97.990	97.990	-	136	1 641 067	136	1 641 067
421 ETFX FTSE MIB SUPER SHORT STRATEGY (2X)	ETFS	ITS2	IE00047G8N52	97.730	97.730	-	190	1 726 582	190	1 726 582
422 UBS-ETF EURO STOXX 50 A	ETF	E50EUA	LU0136234068	26.360	26.360	-	-	-	-	-
423 UBS-ETF EURO STOXX 50 I	ETF	E50EUI	LU0155367302	26 383.950	26 383.950	-	-	-	-	-
424 UBS-ETF MSCI EMU A	ETF	EMUEUA	LU0147308422	81.790	81.790	-	-	-	-	-
425 UBS-ETF MSCI EMU I	ETF	EMUEUI	LU0446735093	82 353.850	82 353.850	-	-	-	-	-
426 UBS-ETF MSCI EMU VALUE A	ETF	EMVEUA	LU0446734369	33.025	33.025	-	-	-	-	-
427 UBS-ETF MSCI EUROPE A	ETF	EUREUA	LU0446734104	42.980	42.980	-	-	-	-	-
428 UBS-ETF MSCI CANADA I	ETF	CANEUI	LU0446734955	22 751.760	22 751.760	-	-	-	-	-
429 UBS-ETF MSCI EUROPE I	ETF	EUREUI	LU0446734286	43 033.080	43 033.080	-	-	-	-	-
430 UBS-ETF MSCI JAPAN I	ETF	JPNEUI	LU0258212462	23 839.610	23 839.610	-	-	-	-	-
431 UBS-ETF MSCI JAPAN A	ETF	JPNEUA	LU0136240974	23.845	23.845	-	-	-	-	-
432 UBS-ETF MSCI PACIFIC (EX JAPAN) A	ETF	PACEUA	LU0446734526	27.985	27.985	-	1	1 438	1	1 438
433 UBS-ETF MSCI USA A	ETF	USAEUA	LU0136234654	81.340	81.340	-	1	504	1	504
434 UBS-ETF MSCI USA I	ETF	USAEUI	LU0446735259	81 786.400	81 786.400	-	-	-	-	-
435 UBS-ETF MSCI WORLD A	ETF	WRDEUA	LU0340285161	86.420	86.420	-	-	-	-	-
436 UBS-ETF MSCI CANADA A	ETF	CANEUA	LU0446734872	22.685	22.685	-	32	461 207	32	461 207
437 UBS-ETF MSCI WORLD I	ETF	WRDEUI	LU0446735416	86 765.400	86 765.400	-	-	-	-	-
438 DB X-TRACKERS II EUR INFLATION SWAP 5 Y	ETF	XIF5	LU0426245436	112.130	112.130	-	-	-	-	-
439 DB X-TRACKERS II EUR LIQ CORPORATE 100	ETF	XBLC	LU0478205379	120.090	120.090	-	1	1 926	1	1 926
440 LYXOR ETF S&P 500 (A)	ETF	SPX	LU0496786574	8.875	8.520	-4.0%	133	1 567 357	137	1 573 500
ETC										
441 ETFS AGRICULTURE DJ-UBSCI	ETC	AIGA	GB00B15KYH63	4.618	4.698	1.7%	419	11 973 231	3 175	89 940 763
442 ETFS ALL COMMODITIES DJ-UBSCI	ETC	AIGC	GB00B15KY989	10.880	10.765	-1.1%	73	1 808 003	905	20 389 756
443 ETFS ENERGY DJ-UBSCI	ETC	AIGE	GB00B15KYB02	9.465	9.635	1.8%	80	870 540	570	8 670 708
444 ETFS EX-ENERGY DJ-UBSCI	ETC	AIGX	GB00B15KYD26	8.395	8.300	-1.1%	111	3 101 734	170	3 875 170
445 ETFS GRAINS DJ-UBSCI	ETC	AIGG	GB00B15KYL00	3.528	3.505	-0.6%	40	427 663	531	3 330 206
446 ETFS INDUSTRIAL METALS DJ-UBSCI	ETC	AIGI	GB00B15KYG56	13.330	12.375	-7.2%	224	3 090 756	2 384	44 217 929
447 ETFS LIVESTOCK DJ-UBSCI	ETC	AIGL	GB00B15KYK92	3.045	3.043	-0.1%	8	26 051	14	2 513 676
448 ETFS PETROLEUM DJ-UBSCI	ETC	AIGO	GB00B15KYC19	19.870	19.865	0.0%	100	898 344	1 153	9 989 790
449 ETFS PRECIOUS METALS DJ-UBSCI	ETC	AIGP	GB00B15KYF40	15.095	15.305	1.4%	134	3 982 519	537	26 789 671
450 ETFS SOFTS DJ-UBSCI	ETC	AIGS	GB00B15KYJ87	4.178	4.593	9.9%	25	191 513	151	3 374 262
451 ETFS ALUMINIUM	ETC	ALUM	GB00B15KXN58	4.118	3.918	-4.9%	444	3 870 216	3 402	35 117 585
452 ETFS BRENT 1MTH OIL SECURITIES	ETC	OILB	GB00B0CTWC01	34.280	34.260	-0.1%	415	6 632 418	4 227	74 096 139
453 ETFS COFFEE	ETC	COFF	GB00B15KXP72	2.065	2.475	19.9%	520	5 543 789	2 057	14 017 333
454 ETFS COPPER	ETC	COPA	GB00B15KXQ89	28.760	27.005	-6.1%	667	11 986 372	4 465	60 350 492
455 ETFS CORN	ETC	CORN	GB00B15KXS04	0.995	0.967	-2.9%	704	7 698 269	5 752	52 173 163
456 ETFS COTTON	ETC	COTN	GB00B15KXT11	1.514	1.503	-0.7%	175	2 125 490	1 602	14 422 695
457 ETFS CRUDE OIL	ETC	CRUD	GB00B15KXV33	19.740	19.740	0.0%	2 130	36 359 289	16 324	248 865 163
458 ETFS GASOLINE	ETC	UGAS	GB00B15KXW40	24.600	24.830	0.9%	103	1 357 489	666	5 598 032
459 ETFS GOLD	ETC	BULL	GB00B15KXX56	13.305	13.570	2.0%	1 743	32 675 276	7 376	122 794 113
460 ETFS HEATING OIL	ETC	HEAT	GB00B15KXY63	14.540	14.565	0.2%	79	1 354 561	379	5 909 927
461 ETFS LEAN HOGS	ETC	HOGS	GB00B15KXZ70	0.949	0.922	-2.8%	147	1 326 846	1 399	11 248 949
462 ETFS LIVE CATTLE	ETC	CATL	GB00B15KY096	5.540	5.590	0.9%	47	311 973	492	5 603 770
463 ETFS NATURAL GAS	ETC	NGAS	GB00B15KY104	0.330	0.344	4.2%	6 930	96 919 412	42 868	468 046 700
464 ETFS NICKEL	ETC	NICK	GB00B15KY211	20.360	18.380	-9.7%	744	8 249 142	7 224	79 733 708
465 ETFS SILVER	ETC	SLVR	GB00B15KY328	17.630	17.630	0.0%	299	3 653 305	1 791	27 033 793
466 ETFS SOYBEAN OIL	ETC	SOYO	GB00B15KY435	5.330	5.110	-4.1%	27	134 217	298	3 894 009
467 ETFS SOYBEANS	ETC	SOYB	GB00B15KY542	11.860	12.000	1.2%	80	699 059	848	10 375 691
468 ETFS SUGAR	ETC	SUGA	GB00B15KY658	9.650	10.435	8.1%	2 910	25 904 228	14 054	108 986 573
469 ETFS WHEAT	ETC	WEAT	GB00B15KY765	1.414	1.401	-0.9%	883	6 167 893	5 895	45 032 076
470 ETFS WTI 2MTH OIL SECURITIES	ETC	OILW	GB00B0CTWK84	39.580	39.515	-0.2%	103	3 243 583	934	19 284 497
471 ETFS ZINC	ETC	ZINC	GB00B15KY872	6.170	5.555	-10.0%	726	8 935 849	3 763	33 348 625
472 ETFS GOLD BULLION SECURITIES	ETC	GBS	GB00B0DFH282	96.740	98.780	2.1%	2 829	106 595 702	12 433	374 837 968
473 ETFS PHYSICAL PLATINUM	ETC	PHPT	JE00B1VS2W53	125.580	122.800	-2.2%	577	12 943 130	3 969	65 700 979
474 ETFS PHYSICAL PALLADIUM	ETC	PHPD	JE00B1VS3002	37.310	35.450	-5.0%	772	8 514 420	6 512	56 282 496
475 ETFS PHYSICAL SILVER	ETC	PHAG	JE00B1VS3333	14.910	14.905	0.0%	1 362	22 665 567	6 785	122 367 855
476 ETFS PHYSICAL GOLD	ETC	PHAU	JE00B1VS3770	97.910	99.970	2.1%	4 054	125 404 265	16 068	608 194 474
477 ETFS PHYSICAL PM BASKET	ETC	PHPM	JE00B1VS3W29	77.070	77.210	0.2%	304	5 316 253	1 876	19 652 423
478 ETFS FORWARD GRAINS DJ-UBSCI-F3	ETC	GRAF	JE00B24DMN53	5.945	5.865	-1.3%	15	70 974	100	688 652
479 ETFS FORWARD NATURAL GAS	ETC	NGAF	JE00B24DM351	7.665	7.695	0.4%	86	698 912	612	4 681 156
480 ETFS FORWARD LIVESTOCK DJ-UBSCI-F3	ETC	FLIV	JE00B24DMM47	12.650	12.580	-0.6%	1	2 926	11	26 908
481 ETFS FORWARD ALL COMMODITIES DJ-UBSCI-F3	ETC	FAIG	JE00B24DMC49	21.170	20.970	-0.9%	12	342 994	58	1 375 736
482 ETFS FORWARD SOFTS DJ-UBSCI-F3	ETC	SOFF	JE00B24DML30	7.080	7.580	7.1%	6	194 552	31	350 627
483 ETFS FORWARD AGRICULTURE DJ-UBSCI-F3	ETC	FAGR	JE00B24DMK23	7.780	7.805	0.3%	21	207 750	271	2 193 429
484 ETFS FORWARD ENERGY DJ-UBSCI-F3	ETC	ENEF	JE00B24DMD55	33.520	33.495	-0.1%	-	-	12	96 887
485 ETFS FORWARD PETROLEUM DJ-UBSCI-F3	ETC	FPET	JE00B24DMF79	51.040	50.920	-0.2%	18	275 283	147	2 377 900
486 ETFS FORWARD EX-ENERGY DJ-UBSCI-F3	ETC	EXEF	JE00B24DMG86	14.050	13.865	-1.3%	1	3 443	19	116 867
487 ETFS FORWARDIndustr METALS DJ-UBSCI-F3	ETC	FIND	JE00B24DMJ18	19.140	17.865	-6.7%	17	39 932	127	902 347
488 ETFS SHORT ALL COMMODITIES DJ-UBSCI	ETC	SALL	JE00B24DK775	55.330	55.140	-0.3%	11	41 578	97	1 058 349
489 ETFS LEVERAGED PLATINUM	ETC	LPLA	JE00B2NFV134	16.410	15.780	-3.8%	376	3 165 228	2 806	24 935 234
490 ETFS LEVERAGED WHEAT	ETC	LWEA	JE00B2NFTX18	2.268	2.200	-3.0%	2 830	19 509 864	12 896	86 593 835
491 ETFS SHORT ALUMINIUM	ETC	SALU	JE00B24DK421	53.290	55.750	4.6%	86	271 350	491	3 950 502
492 ETFS LEVERAGED SILVER	ETC	LSIL	JE00B2NFTS64	19.580	19.355	-1.1%	1 178	12 858 979	6 872	81 692 741
493 ETFS SHORT COPPER	ETC	SCOP	JE00B24DK645	32.140	33.735	5.0%	413	4 806 306	2 743	31 282 632
494 ETFS LEVERAGED NATURAL GAS	ETC	LNGA	JE00B2NFTQ41	0.637	0.677	6.3%	15 775	151 765 736	94 125	720 614 936
495 ETFS LEVERAGED GOLD	ETC	LBUL	JE00B2NFTL95	49.130	51.000	3.8%	1 131	23 643 405	5 261	92 864 452
496 ETFS SHORT CRUDE OIL	ETC	SOIL	JE00B24DK975	54.930	54.470	-0.8%	688	13 541 928	5 444	105 081 080
497 ETFS LEVERAGED CRUDE OIL	ETC	LOIL	JE00B2NFTJ73	3.530	3.493	-1.1%	6 239	48 457 303	29 630	241 121 640
498 ETFS SHORT GOLD	ETC	SBUL	JE00B24DKC09	27.170	26.550	-2.3%	371	4 715 103	2 680	32 607 825
499 ETFS LEVERAGED COPPER	ETC	LCOP	JE00B2NFTF36	14.680	12.820	-12.7%	1 994	14 610 415	6 474	47 898 623
5										