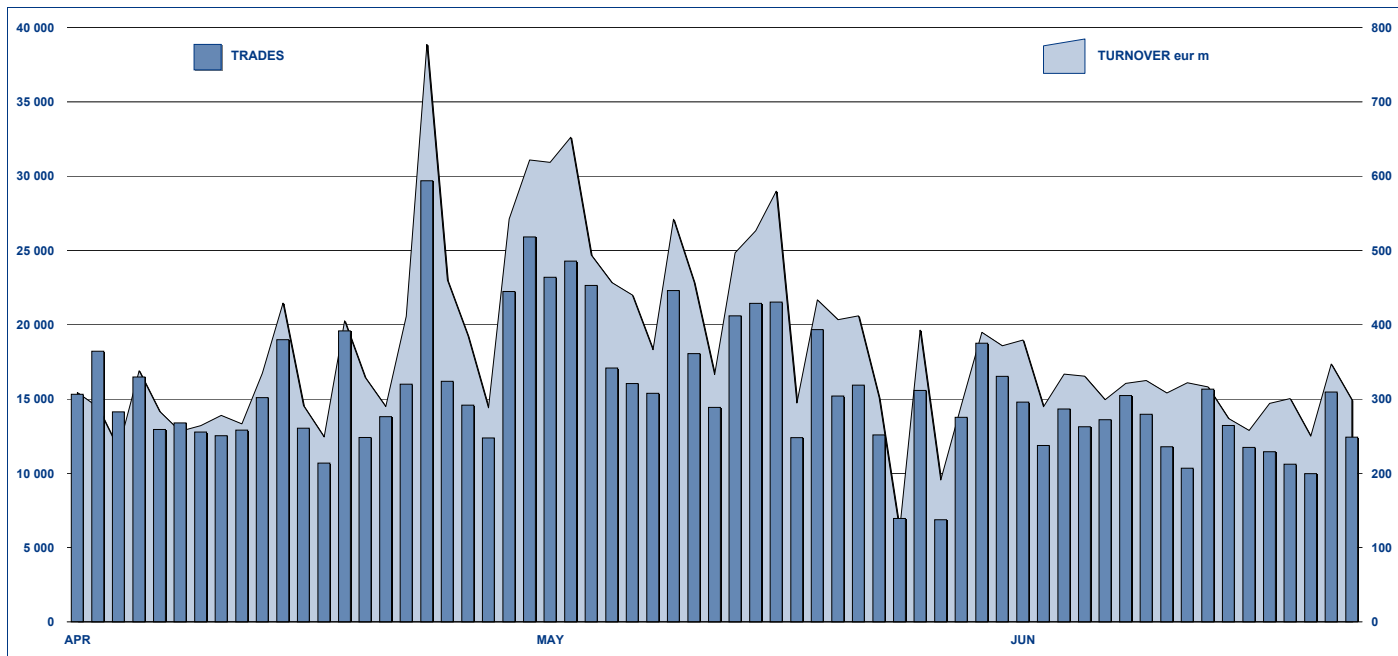


## ETFPLUS DAILY TURNOVER



## MAIN INDICATORS

	LISTED INSTRUMENT				TRADING					
	LISTED	MONTH	AUM in MT		MAY 2010		JUNE 2010		JAN - JUN 2010	
	END of MONTH	NEW LISTED	eur m	eur m	Trades	Turnover eur m	Trades	Turnover eur m	Trades	Turnover eur m
ETF - DEVELOPED MARKET	155	17	5 773.47	5 533.55	200 377	5 540.03	150 765	4 087.89	801 907	22 050.58
ETF - CORPORATE E GOV BOND	79	2	4 963.80	4 964.34	21 341	1 055.82	15 796	603.21	103 466	4 960.95
ETF - EMERGING MARKETS	61	-	3 457.75	3 278.29	66 480	1 260.98	46 600	1 007.79	398 219	6 765.71
ETF - STYLE	24	1	428.54	426.18	3 061	58.73	1 852	35.32	16 222	298.16
OTHERS	121	-	1 164.94	1 121.88	16 713	350.69	11 226	255.48	94 136	1 852.86
ETC	67	-	1 625.36	1 692.19	72 272	1 120.91	64 888	893.03	368 047	4 495.32
<b>TOTAL</b>	<b>507</b>	<b>20</b>	<b>17 413.85</b>	<b>17 016.42</b>	<b>380 244</b>	<b>9 387.16</b>	<b>291 127</b>	<b>6 882.72</b>	<b>1 781 997</b>	<b>40 423.57</b>

### MOST TRADED IN THE MONTH BY TRADES AND RELATIVE SPREAD

Name	Alphab.	ISIN	TRADES		SPREAD	
			number	% TOT	BBO	25 000 €
1 LYXOR ETF XBEAR FTSE MIB	XBRMIB	FR0010446666	49 315	16.9%	0.09%	0.10%
2 LYXOR ETF LEVERAGED FTSE MIB	LEVMIIB	FR0010446658	37 581	12.9%	0.13%	0.15%
3 ETFS LEVERAGED NATURAL GAS	LNGA	JE00B2NFTQ41	15 775	5.4%	0.24%	0.29%
4 LYXOR ETF MSCI INDIA (A)	INDI	FR0010361683	8 654	3.0%	0.15%	0.17%
5 LYXOR ETF FTSE MIB	ETFMIB	FR0010010827	7 815	2.7%	0.07%	0.08%
6 ETFS NATURAL GAS	NGAS	GB00B15KY104	6 930	2.4%	0.23%	0.25%
7 ETFS LEVERAGED CRUDE OIL	LOIL	JE00B2NFTJ73	6 239	2.1%	0.23%	0.25%
8 LYXOR ETF LEVDAX	DAXLEV	LU0252634307	5 508	1.9%	0.12%	0.12%
9 LYXOR ETF CHINA	CINA	FR0010204081	4 765	1.6%	0.13%	0.16%
10 ISHARES S&P 500	IUSA	IE0031442068	4 322	1.5%	0.07%	0.07%

### MOST TRADED IN THE MONTH BY TURNOVER AND RELATIVE SPREAD

Name	Alphab.	ISIN	TURNOVER		SPREAD	
			ML di €	% TOT	BBO	25 000 €
1 LYXOR ETF XBEAR FTSE MIB	XBRMIB	FR0010446666	1 078	15.7%	0.09%	0.10%
2 LYXOR ETF LEVERAGED FTSE MIB	LEVMIIB	FR0010446658	599	8.7%	0.13%	0.15%
3 ISHARES EURO STOXX 50	EUE	IE0008471009	213	3.1%	0.09%	0.09%
4 LYXOR ETF FTSE MIB	ETFMIB	FR0010010827	202	2.9%	0.07%	0.08%
5 LYXOR ETF LEVDAX	DAXLEV	LU0252634307	174	2.5%	0.12%	0.12%
6 ISHARES S&P 500	IUSA	IE0031442068	155	2.2%	0.07%	0.07%
7 LYXOR ETF DAX	DAXX	LU0252633754	152	2.2%	0.07%	0.07%
8 ETFS LEVERAGED NATURAL GALNGA	JE00B2NFTQ41	152	2.2%	0.24%	0.29%	
9 DB X-TRACKERS EURO STOXX 50	XSSX	LU0292106753	130	1.9%	0.14%	0.15%
# ETFS PHYSICAL GOLD	PHAU	JE00B1VS3770	125	1.8%	0.05%	0.05%

### MOST TRADED IN THE YEAR BY TURNOVER AND RELATIVE SPREAD

Name	Alphab.	ISIN	TRADES		SPREAD	
			number	% TOT	BBO	25 000 €
1 LYXOR ETF XBEAR FTSE MIB	XBRMIB	FR0010446666	231 986	13.0%	0.09%	0.10%
2 LYXOR ETF LEVERAGED FTSE MIB	LEVMIIB	FR0010446658	172 691	9.7%	0.12%	0.14%
3 ETFS LEVERAGED NATURAL GAS	LNGA	JE00B2NFTQ41	94 125	5.3%	0.25%	0.31%
4 LYXOR ETF MSCI INDIA (A)	INDI	FR0010361683	64 095	3.6%	0.16%	0.20%
5 LYXOR ETF FTSE MIB	ETFMIB	FR0010010827	50 237	2.8%	0.07%	0.07%
6 LYXOR ETF CHINA	CINA	FR0010204081	45 017	2.5%	0.13%	0.16%
7 ETFS NATURAL GAS	NGAS	GB00B15KY104	42 868	2.4%	0.24%	0.27%
8 LYXOR ETF BRAZIL (IBOVESPA) (A)	BRA	FR0010408799	40 428	2.3%	0.20%	0.25%
9 ISHARES MSCI BRAZIL	IBZL	IE00B0M63516	36 258	2.0%	0.17%	0.21%
10 ISHARES S&P 500	IUSA	IE0031442068	31 302	1.8%	0.07%	0.07%

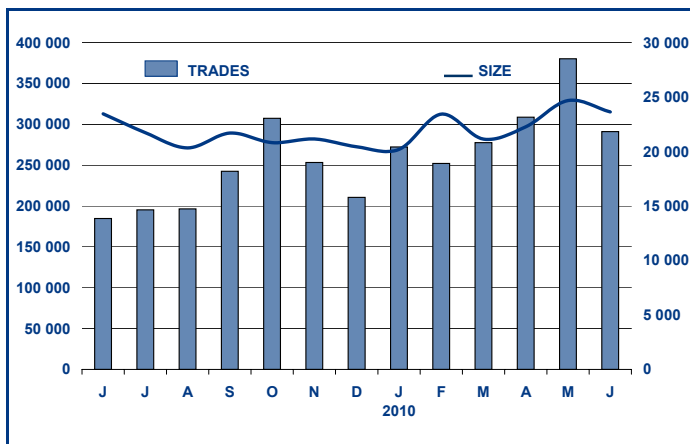
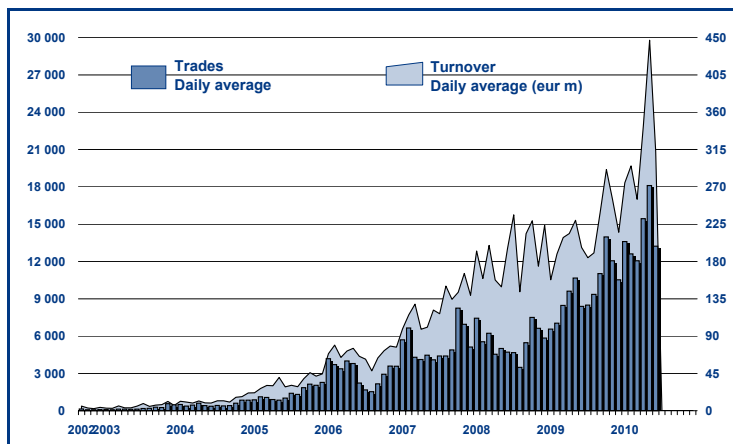
### MOST TRADED IN THE YEAR BY TRADES AND RELATIVE SPREAD

Name	Alphab.	ISIN	TURNOVER		SPREAD	
			ML di €	% TOT	BBO	25 000 €
1 LYXOR ETF XBEAR FTSE MIB	XBRMIB	FR0010446666	4 891	12.1%	0.09%	0.10%
2 LYXOR ETF LEVERAGED FTSE MIB	LEVMIIB	FR0010446658	3 077	7.6%	0.12%	0.14%
3 ISHARES EURO STOXX 50	EUE	IE0008471009	1 265	3.1%	0.08%	0.09%
4 LYXOR ETF FTSE MIB	ETFMIB	FR0010010827	1 254	3.1%	0.07%	0.07%
5 LYXOR ETF LEVDAX	DAXLEV	LU0252634307	1 112	2.8%	0.14%	0.15%
6 ISHARES S&P 500	IUSA	IE0031442068	1 101	2.7%	0.07%	0.07%
7 LYXOR ETF EURO CASH	LEONIA	FR0010510800	763	1.9%	0.01%	0.01%
8 LYXOR ETF MSCI INDIA (A)	INDI	FR0010361683	753	1.9%	0.16%	0.20%
9 LYXOR ETF DAX	DAXX	LU0252633754	739	1.8%	0.07%	0.08%
# LYXOR ETF EURO STOXX 50	MSE	FR0007054358	736	1.8%	0.12%	0.12%

### TRADING BY SIZE OF EVOLUTION

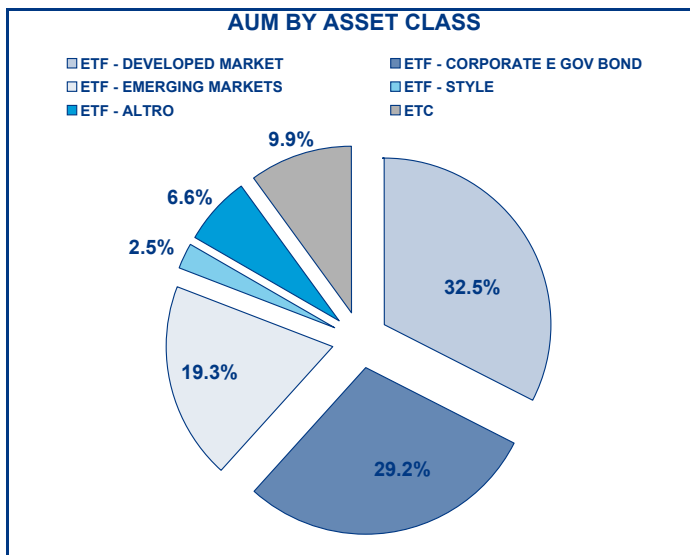
SIZE OF TURNOVER		MAY 2010		JUNE 2010		YEAR 2010			
		trades	turnover €	trades	turnover €	trades	% TOT	turnover €	% TOT
-	500	26 422	7.0	21 266	5.5	138 862	7.8%	34.1	0.1%
500	1 000	25 613	19.3	19 154	14.4	123 746	6.9%	92.3	0.2%
1 000	2 000	49 419	71.8	38 164	56.0	235 862	13.2%	344.7	0.9%
2 000	3 000	37 898	92.7	26 615	65.1	168 849	9.5%	414.4	1.0%
3 000	4 000	24 451	85.3	21 361	75.2	125 990	7.1%	438.7	1.1%
4 000	5 000	27 325	122.2	18 526	82.9	112 261	6.3%	504.5	1.2%
5 000	6 000	18 057	98.7	13 832	75.4	90 756	5.1%	494.3	1.2%
6 000	7 000	12 558	81.0	9 820	63.4	54 853	3.1%	354.8	0.9%
7 000	8 000	9 004	67.4	8 090	60.6	45 242	2.5%	338.9	0.8%
8 000	9 000	9 327	79.3	6 235	52.9	42 929	2.4%	364.6	0.9%
9 000	10 000	10 178	97.3	7 450	71.3	44 810	2.5%	429.2	1.1%
10 000	15 000	31 516	384.6	25 892	317.2	157 119	8.8%	1 924.9	4.8%
15 000	20 000	16 633	292.1	13 336	233.9	84 891	4.8%	1 474.4	3.6%
20 000	25 000	13 304	294.4	9 427	209.4	56 596	3.2%	1 255.3	3.1%
25 000	30 000	8 364	230.0	6 565	180.0	37 942	2.1%	1 042.6	2.6%
30 000	35 000	5 316	171.6	4 321	138.7	27 013	1.5%	872.7	2.2%
35 000	40 000	5 072	190.5	4 289	160.9	23 531	1.3%	882.1	2.2%
40 000	45 000	5 208	220.8	3 436	145.6	19 929	1.1%	844.3	2.1%
45 000	50 000	3 820	181.2	2 613	124.4	15 134	0.8%	720.5	1.8%
50 000	75 000	10 529	638.5	8 149	493.4	48 078	2.7%	2 925.7	7.2%
75 000	100 000	6 694	587.3	5 706	502.3	31 380	1.8%	2 728.8	6.8%
100 000	125 000	5 063	567.1	4 308	477.3	22 444	1.3%	2 505.1	6.2%
125 000	150 000	4 244	580.8	2 397	325.2	15 854	0.9%	2 170.6	5.4%
150 000		14 229	4 226.0	10 175	2 951.6	57 926	3.3%	17 266.3	42.7%
<b>TOTAL</b>		<b>380 244</b>	<b>9 387.2</b>	<b>291 127</b>	<b>6 882.7</b>	<b>1 781 997</b>		<b>40 423.6</b>	

### TRADING EVOLUTION



### FOCUS

MONTH	INSTRUMENT WITH HIGHEST TURNOVER		INSTRUMENT WITH HIGHEST TRADES NUMBER	
	ALPHA CODE	EUR	ALPHA CODE	NUMBER
JUNE	LEONIA	359 735 004	XBRMIB	22 718
JULY	XBRMIB	432 277 872	XBRMIB	28 293
AUGUST	LEVMI	378 528 076	XBRMIB	22 950
SEPTEMBER	XBRMIB	569 463 778	XBRMIB	30 084
OCTOBER	XBRMIB	697 186 945	XBRMIB	38 810
NOVEMBER	XBRMIB	675 952 669	XBRMIB	35 201
DECEMBER	XBRMIB	347 472 099	XBRMIB	19 582
JANUARY 2010	XBRMIB	462 424 020	XBRMIB	25 764
FEBRUARY	XBRMIB	745 194 115	XBRMIB	37 501
MARCH	XBRMIB	520 770 821	XBRMIB	27 007
APRIL	XBRMIB	688 925 674	XBRMIB	32 451
MAY	XBRMIB	1 396 182 116	XBRMIB	59 948
JUNE	XBRMIB	1 077 877 314	XBRMIB	49 315



	SPREAD							
	BBO		5 000 €		15 000 €		25 000 €	
	SPREAD	% OBSER	SPREAD	% OBSER	SPREAD	% OBSER	SPREAD	% OBSER
<b>ETF - DEVELOPED MARKET</b>	<b>0.16%</b>	<b>99.87%</b>	<b>0.16%</b>	<b>99.84%</b>	<b>0.16%</b>	<b>99.80%</b>	<b>0.16%</b>	<b>99.78%</b>
EQUITY ITALY	0.09%	99.94%	0.09%	99.94%	0.09%	99.94%	0.09%	99.94%
EQUITY EUROPE - REGIONAL	0.17%	99.84%	0.17%	99.81%	0.17%	99.76%	0.17%	99.74%
EQUITY EUROPE - SINGLE COUNTRY	0.13%	99.93%	0.13%	99.92%	0.13%	99.89%	0.13%	99.82%
EQUITY WORLD	0.22%	99.97%	0.22%	99.95%	0.23%	99.91%	0.23%	99.91%
EQUITY NORTH AMERICA	0.13%	99.85%	0.13%	99.77%	0.13%	99.72%	0.13%	99.70%
EQUITY PACIFIC	0.24%	99.92%	0.25%	99.92%	0.26%	99.91%	0.27%	99.91%
EQUITY SHORT (DEVELOPED)	0.17%	100.00%	0.17%	99.99%	0.17%	99.97%	0.18%	99.93%
BUYWRITE - COVERED CALL	1.49%	92.59%	1.56%	91.74%	1.58%	91.61%	1.56%	91.22%
LEVERAGED LONG	0.19%	99.99%	0.19%	99.98%	0.20%	99.96%	0.20%	99.91%
LEVERAGED SHORT	0.59%	99.98%	0.59%	99.95%	0.60%	99.89%	0.60%	99.86%
PROTECTIVE PUT	0.97%	95.77%	0.81%	92.81%	0.82%	92.76%	0.82%	92.76%
SEMI-ACTIVE	0.11%	100.00%	0.12%	100.00%	0.12%	99.98%	0.12%	99.97%
<b>ETF - EMERGING MARKETS</b>	<b>0.23%</b>	<b>99.96%</b>	<b>0.24%</b>	<b>99.94%</b>	<b>0.25%</b>	<b>99.92%</b>	<b>0.26%</b>	<b>99.84%</b>
EQUITY EMERGING - AFRICA/MIDDLE EAST	0.56%	99.88%	0.60%	99.79%	0.64%	99.65%	0.64%	98.83%
EQUITY EMERGING - ASIA	0.19%	99.99%	0.19%	99.98%	0.20%	99.98%	0.21%	99.95%
EQUITY EMERGING - CENTRE/SOUTH AMERICA	0.23%	100.00%	0.24%	100.00%	0.25%	100.00%	0.26%	99.97%
EQUITY EMERGING - EAST EUROPE	0.36%	99.98%	0.37%	99.91%	0.38%	99.87%	0.38%	99.67%
EQUITY EMERGING - WORLD	0.23%	99.89%	0.23%	99.85%	0.24%	99.82%	0.25%	99.77%
EQUITY SHORT (EMERGING)	0.82%	96.12%	0.82%	96.00%	0.82%	95.81%	0.82%	95.81%
<b>ETF - CORPORATE GOVERNMENT BONDS</b>	<b>0.14%</b>	<b>99.03%</b>	<b>0.15%</b>	<b>98.90%</b>	<b>0.16%</b>	<b>98.37%</b>	<b>0.16%</b>	<b>97.96%</b>
INFLATION	0.24%	99.73%	0.26%	99.68%	0.28%	99.61%	0.29%	99.54%
LIQUIDITY	0.04%	98.09%	0.05%	97.85%	0.06%	95.84%	0.06%	95.09%
CORPORATE BOND	0.10%	99.92%	0.11%	99.92%	0.12%	99.89%	0.12%	99.80%
AGGREGATE BOND	0.26%	100.00%	0.27%	100.00%	0.27%	100.00%	0.27%	100.00%
BOND SHORT	0.31%	96.78%	0.32%	96.43%	0.33%	95.84%	0.31%	93.30%
GOVERNMENT BONDS - EMERGING	0.44%	100.00%	0.49%	100.00%	0.57%	94.27%	0.65%	82.27%
GOVERNMENT BONDS - EURO	0.17%	98.85%	0.18%	98.70%	0.18%	98.57%	0.19%	98.49%
GOVERNMENT BONDS - WORLD	0.42%	95.45%	0.41%	91.75%	0.42%	91.60%	0.42%	91.50%
GOVERNMENT BONDS - EX EURO	0.20%	98.87%	0.20%	98.62%	0.20%	98.50%	0.20%	98.49%
<b>ETF - STYLE</b>	<b>0.29%</b>	<b>99.76%</b>	<b>0.29%</b>	<b>99.61%</b>	<b>0.29%</b>	<b>99.57%</b>	<b>0.30%</b>	<b>99.56%</b>
EQUITY STYLE	0.29%	99.76%	0.29%	99.61%	0.29%	99.57%	0.30%	99.56%
<b>ETF - OTHERS</b>	<b>0.31%</b>	<b>99.08%</b>	<b>0.31%</b>	<b>98.91%</b>	<b>0.31%</b>	<b>98.83%</b>	<b>0.31%</b>	<b>98.79%</b>
EQUITY THEMATIC	0.21%	99.95%	0.21%	99.93%	0.21%	99.93%	0.21%	99.93%
COMMODITIES	0.51%	99.24%	0.52%	98.90%	0.52%	98.71%	0.52%	98.59%
CREDIT INDICES	0.27%	99.14%	0.26%	98.80%	0.27%	98.71%	0.27%	98.69%
REAL ESTATE	0.30%	82.33%	0.30%	82.23%	0.30%	82.01%	0.30%	82.01%
REAL ESTATE	0.42%	99.82%	0.43%	99.57%	0.44%	99.51%	0.44%	99.33%
<b>ETF</b>	<b>0.18%</b>	<b>99.56%</b>	<b>0.19%</b>	<b>99.48%</b>	<b>0.19%</b>	<b>99.29%</b>	<b>0.20%</b>	<b>99.13%</b>

Data obtained from 5 minutes snapshots of the trading book (5 levels) during trading days of the relevant month.

Market Spread: means the difference between bid and ask prices divided by the mid quote at which it was possible to buy and sell simultaneously the relevant amount.

% Obser: means the percentage of observations at which it would be possible to buy and sell simultaneously the relevant amount.

The average showed is the weighted average on AUM deposited in Monte Titoli is used: it's the average calculated taking into account the AUM (asset under management) deposited in Monte Titoli.

## News

During the first half-year of 2010 the ETFplus market was characterized by a significant increase in the listing activity and in the trading volumes. In fact 107 new ETFs were listed which, together with the already listed instruments at the end of 2009 (ETFs 440, ETCs 67), generated trading volumes equal to 1 781 997 trades and 40 423.6 million euros (respectively +62% and +69% vs. the first half-year 2009 - 1 055 264 trades and 24 894.5 million euros are the relevant figures for that period).

Moreover, ETFplus market welcomed a new issuer (UBS), who entered the Italian market with 16 new ETFs: Euro Stoxx 50 A, Euro Stoxx 50 I, MSCI Emu A, MSCI Emu I, MSCI Emu Value A, MSCI Europe A, MSCI Europe I, MSCI Japan I, MSCI Japan A, MSCI Pacific (Ex Japan) A, MSCI Usa A, MSCI Usa I, MSCI World A, MSCI World I, MSCI Canada A, MSCI Canada I.

In addition ETFS Fund Company plc listed two new structured ETFs on the FTSE MIB index: ETFX FTSE MIB leveraged (2x) fund and ETFX FTSE MIB super short strategy (2x). Finally, two ETFs issued by db x-trackers II were launched: db x-trackers II Eur liq corporate 100 and db x-trackers II Eur inflation swap 5 Y.

## Markets Analysis

Piazza Affari, 6 - 20123 Milano  
T +39 02 72426.478 | Fax +39 02 8646.4323  
e-mail: research@borsaitaliana.it  
www.borsaitaliana.it

 **Borsa Italiana**  
London Stock Exchange Group









