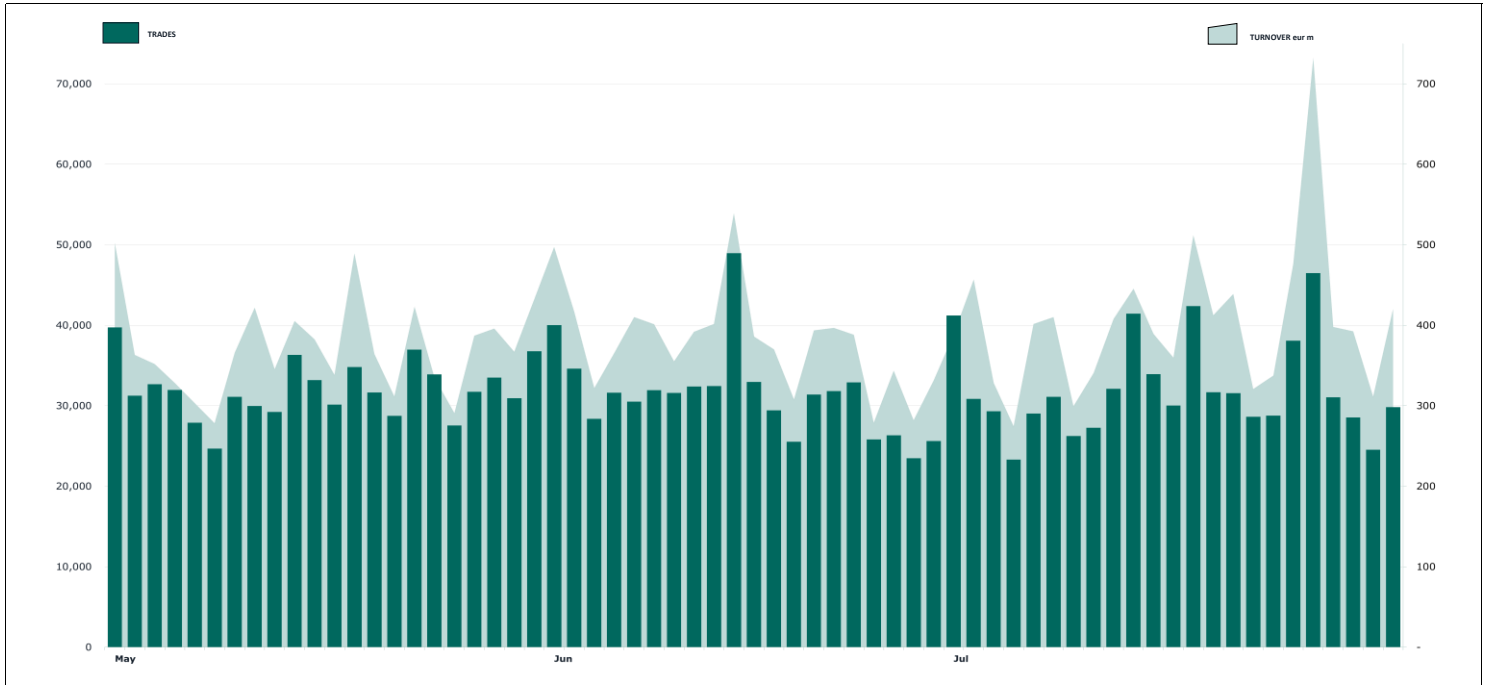


**ETFPLUS DAILY TURNOVER**

**MAIN INDICATORS**

	LISTED INSTRUMENT				TRADING					
	LISTED	MONTH	AUM in MT		JUNE 2024		JULY 2024		JAN - JUL 2024	
	END OF MONTH	NEW LISTED	eur m	eur m	Trades	Turnover	Trades	Turnover	Trades	Turnover
			30/06/2024	31/07/2024		eur m		eur m		eur m
<b>ETF - DEVELOPED MARKET</b>	597	5	62,064.22	62,574.42	173,587	2,669.62	236,157	3,635.96	1,295,735	20,124.17
<b>ETF - CORPORATE AND GOV BOND</b>	479	2	44,490.08	46,306.86	124,916	2,087.48	138,482	2,221.33	944,098	15,448.19
<b>ETF - EMERGING MARKETS</b>	137	1	6,838.97	6,774.14	48,091	310.71	44,230	367.69	313,738	2,364.47
<b>OTHERS</b>	347	2	12,161.85	12,284.88	111,652	982.21	133,067	1,276.05	894,546	7,310.99
<b>ETC/ETN</b>	347	0	7,858.21	8,096.10	169,404	1,528.99	185,296	1,752.38	1,337,242	11,875.41
<b>TOTAL</b>	<b>1,907</b>	<b>10</b>	<b>133,413.32</b>	<b>136,036.40</b>	<b>627,650</b>	<b>7,579.01</b>	<b>737,232</b>	<b>9,254.41</b>	<b>4,785,350</b>	<b>57,123.241</b>
	<i>of which RFQ</i>					<i>214.17</i>		<i>320.70</i>		<i>2,218.39</i>

**MOST TRADED IN THE MONTH BY TRADES AND RELATIVE SPREAD**

Name	Alphab.	ISIN	TRADES		BBO	SPREAD	25 000 €
			number	% TOT			
1 ISHARES CORE MSCI WORLD UCITS ETF ACC	SWDA	IE00BALS1983	12,688	1.7%	0.030%	0.034%	
2 WISDOMTREE NATURAL GAS 3X DAILY LEV	3NGL	XS2819843900	12,584	1.7%	0.441%	0.470%	
3 VANGUARD S&P 500 UCITS ETF ACC	VUAA	IE00BPMXXD54	8,639	1.2%	0.036%	0.040%	
4 WANEC SEMICONDUCTOR UCITS ETF	SMH	IE00BNC82736	8,311	1.1%	0.108%	0.123%	
5 FRANKLIN S&P500 PARIS CLIMATE UCITS ETF	USPA	IE00BMDP8272	7,956	1.1%	0.112%	0.152%	
6 WISDOMTREE NATURAL GAS 3X DAILY SHORT	3NGS	XS2819843223	7,756	1.1%	0.627%	0.647%	
7 WISDOMTREE NASDAQ 100 3X DAILY LEVERAGED	QQQ3	IE00BLRRL42	7,195	1.0%	0.140%	0.154%	
8 WISDOMTREE FTSE MIB 3X DAILY LEVERAGED	3ITL	IE00B8NB3063	7,061	1.0%	0.104%	0.106%	
9 INVESCO PHYSICAL GOLD ETC	SGLD	IE00B579F325	6,608	0.9%	0.045%	0.049%	
10 WISDOMTREE WTI CRUDE OIL 3X DAILY L	3OIL	IE00BMTM6832	6,459	0.9%	0.240%	0.248%	

**MOST TRADED IN THE MONTH BY TURNOVER AND RELATIVE SPREAD**

Name	Alphab.	ISIN	TURNOVER		BBO	SPREAD	25 000 €
			eur m	% TOT			
1 WISDOMTREE NASDAQ 100 3X DAILY LEVERAGED	QQQ3	IE00BLRRL42	176	1.9%	0.140%	0.154%	
2 XTRACKERS II EUR OVNI RATE SWA UCITS ETF	XEON	LU0290358497	167	1.8%	0.005%	0.005%	
3 ISHARES CORE MSCI WORLD UCITS ETF ACC	SWDA	IE00BALS1983	157	1.7%	0.030%	0.034%	
4 WISDOMTREE FTSE MIB 3X DAILY LEVERAGED	3ITL	IE00B8NB3063	153	1.7%	0.104%	0.106%	
5 WISDOMTREE WTI CRUDE OIL 3X DAILY L	3OIL	IE00BMTM6832	123	1.3%	0.240%	0.248%	
6 Amundi FTSE MIB Daily (2x) Leveraged UCITS ETF	LEVMB	FR0010446658	100	1.1%	0.067%	0.067%	
7 ISHARES CORE S&P 500 UCITS ETF USD ACC	CSSPX	IE00B5BMR087	97	1.0%	0.025%	0.029%	
8 SPDR RUSSELL 2000 US SMALL CAP UCITS ETF	RZUS	IE00B138QD84	80	0.9%	0.069%	0.071%	
9 WISDOMTREE WTI CRUDE OIL 3X DAILY SHO	3OIS	XS2819844387	79	0.9%	0.243%	0.234%	
10 INVESCO PHYSICAL GOLD ETC	SGLD	IE00B579F325	77	0.8%	0.045%	0.049%	

**MOST TRADED IN THE YEAR BY TRADES AND RELATIVE SPREAD**

Name	Alphab.	ISIN	TRADES		BBO	SPREAD	25 000 €
			number	% TOT			
1 WISDOMTREE NATURAL GAS 3X DAILY LEV	3NGL	XS2819843900	109,435	2.3%	0.385%	0.417%	
2 ISHARES CORE MSCI WORLD UCITS ETF ACC	SWDA	IE00BALS1983	89,384	1.4%	0.033%	0.035%	
3 WISDOMTREE NATURAL GAS 3X DAILY SHORT	3NGS	XS2819843223	64,990	1.4%	0.683%	0.716%	
4 WISDOMTREE WTI CRUDE OIL 3X DAILY L	3OIL	IE00BMTM6832	51,864	1.1%	0.253%	0.265%	
5 INVESCO PHYSICAL GOLD ETC	SGLD	IE00B579F325	47,566	1.0%	0.054%	0.057%	
6 WISDOMTREE WTI CRUDE OIL 3X DAILY SHO	3OIS	XS2819844387	47,500	1.0%	0.216%	0.221%	
7 VANGUARD S&P 500 UCITS ETF ACC	VUAA	IE00BPMXXD54	44,521	0.9%	0.039%	0.046%	
8 WANEC SEMICONDUCTOR UCITS ETF	SMH	IE00BNC82736	42,616	0.9%	0.117%	0.131%	
9 WISDOMTREE NASDAQ 100 3X DAILY LEVERAGED	QQQ3	IE00BLRRL42	42,528	0.9%	0.137%	0.147%	
10 WISDOMTREE FTSE MIB 3X DAILY LEVERAGED	3ITL	IE00B8NB3063	38,186	0.8%	0.101%	0.104%	

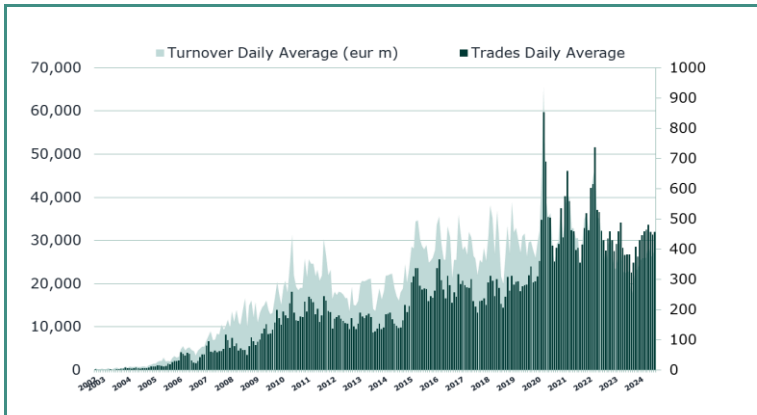
**MOST TRADED IN THE YEAR BY TURNOVER AND RELATIVE SPREAD**

Name	Alphab.	ISIN	TURNOVER		BBO	SPREAD	25 000 €
			eur m	% TOT			
1 WISDOMTREE NASDAQ 100 3X DAILY LEVERAGED	QQQ3	IE00BLRRL42	996	1.7%	0.137%	0.147%	
2 ISHARES CORE MSCI WORLD UCITS ETF ACC	SWDA	IE00BALS1983	964	1.7%	0.033%	0.035%	
3 XTRACKERS II EUR OVNI RATE SWA UCITS ETF	XEON	LU0290358497	776	1.4%	0.010%	0.012%	
4 WISDOMTREE FTSE MIB 3X DAILY LEVERAGED	3ITL	IE00B8NB3063	741	1.3%	0.101%	0.104%	
5 WISDOMTREE WTI CRUDE OIL 3X DAILY L	3OIL	IE00BMTM6832	691	1.2%	0.253%	0.265%	
6 WISDOMTREE NATURAL GAS 3X DAILY LEV	3NGL	XS2819843900	579	1.0%	0.385%	0.417%	
7 INVESCO PHYSICAL GOLD ETC	SGLD	IE00B579F325	557	1.0%	0.054%	0.057%	
8 WISDOMTREE WTI CRUDE OIL 3X DAILY SHO	3OIS	XS2819844387	534	0.9%	0.216%	0.221%	
9 Amundi FTSE MIB Daily (2x) Leveraged UCITS ETF	LEVMB	FR0010446658	534	0.9%	0.068%	0.069%	
10 ISHARES CORE S&P 500 UCITS ETF USD ACC	CSSPX	IE00B5BMR087	527	0.9%	0.026%	0.030%	

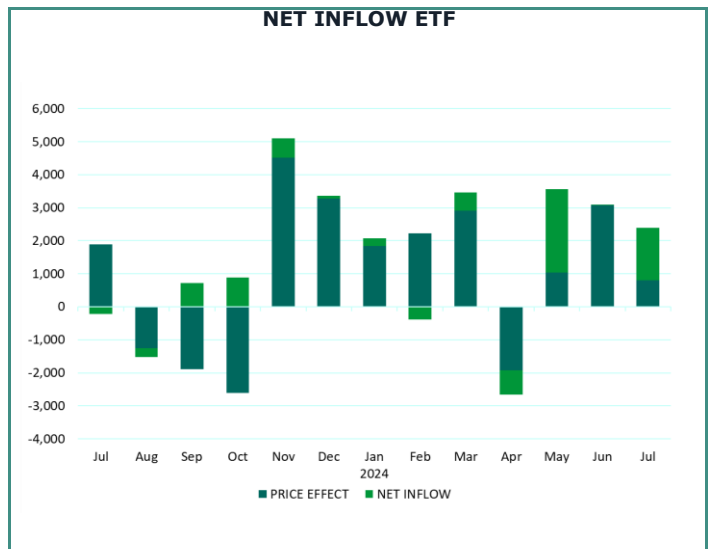
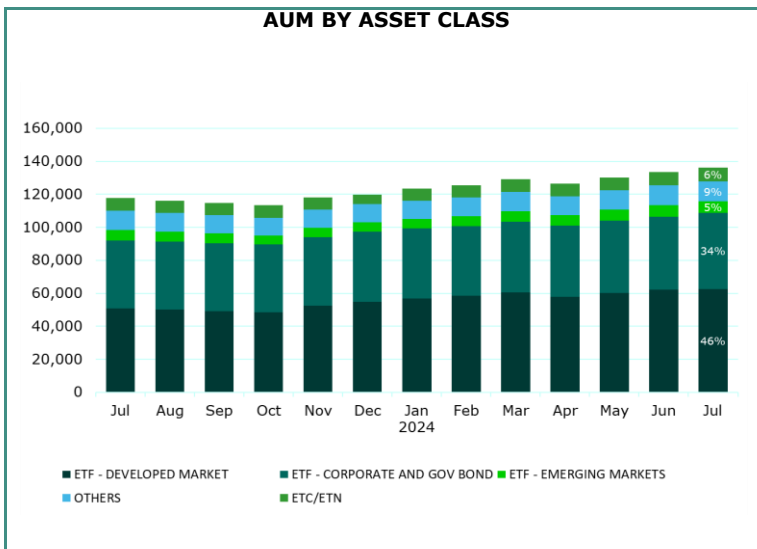
TRADING BY SIZE OF TURNOVER

SIZE OF TURNOVER			JUNE 2024		JULY 2024		YEAR 2023			
	Trades	Turnover eur m	Trades	Turnover eur m	Trades	Turnover eur m	Trades	% TOT	Turnover eur m	% TOT
01: <500	-	500	131,235	24.0	160,964	30.9	966,824	20.2%	188.7	0.3%
02: <1000	500	1,000	59,070	44.3	66,964	50.0	457,945	9.6%	343.8	0.6%
03: <2000	1,000	2,000	76,674	110.4	89,609	128.5	629,006	13.1%	909.0	1.6%
04: <3000	2,000	3,000	51,738	126.8	62,403	153.3	423,202	8.8%	1,043.0	1.8%
05: <4000	3,000	4,000	34,504	119.2	38,978	134.8	283,479	5.9%	982.6	1.7%
06: <5000	4,000	5,000	30,419	137.6	34,887	158.0	239,599	5.0%	1,085.3	1.9%
07: <6000	5,000	6,000	32,188	173.9	35,196	190.2	238,192	5.0%	1,287.6	2.3%
08: <7000	6,000	7,000	15,933	102.9	17,718	114.9	119,374	2.5%	772.4	1.4%
09: <8000	7,000	8,000	14,031	105.3	16,990	127.5	106,152	2.2%	797.1	1.4%
10: <9000	8,000	9,000	13,489	114.3	15,609	132.4	94,849	2.0%	803.2	1.4%
11: <10000	9,000	10,000	18,991	182.3	21,595	207.4	130,082	2.7%	1,245.8	2.2%
12: <15000	10,000	15,000	45,453	539.2	51,523	611.2	325,378	6.8%	3,889.4	6.8%
13: <20000	15,000	20,000	25,381	448.8	30,422	536.8	188,099	3.9%	3,308.5	5.8%
14: <25000	20,000	25,000	15,050	335.1	17,982	399.6	113,849	2.4%	2,530.4	4.4%
15: <30000	25,000	30,000	9,589	262.3	10,662	291.9	71,324	1.5%	1,952.7	3.4%
16: <35000	30,000	35,000	6,803	219.6	7,750	250.7	50,771	1.1%	1,639.7	2.9%
17: <40000	35,000	40,000	5,301	199.3	6,868	257.6	41,599	0.9%	1,561.6	2.7%
18: <45000	40,000	45,000	4,525	191.1	5,433	229.6	33,268	0.7%	1,406.5	2.5%
19: <50000	45,000	50,000	4,142	197.6	5,128	244.2	32,527	0.7%	1,550.0	2.7%
20: <75000	50,000	75,000	13,428	801.8	16,097	966.4	99,535	2.1%	5,951.8	10.4%
21: <100000	75,000	100,000	7,998	705.7	9,279	814.5	49,690	1.0%	4,356.0	7.6%
22: <125000	100,000	125,000	4,427	482.4	5,351	581.8	33,061	0.7%	3,610.2	6.3%
23: <150000	125,000	150,000	2,024	277.2	2,660	363.9	15,700	0.3%	2,152.7	3.8%
24: >= 150000	150,000		5,257	1,677.7	7,164	2,278.6	41,845	0.9%	13,755.5	24.1%
<b>TOTAL</b>			<b>627,650</b>	<b>7,579.0</b>	<b>737,232</b>	<b>9,254.4</b>	<b>4,785,350</b>		<b>57,123.2</b>	

TRADING EVOLUTION



FOCUS



## SPREAD

	SPREAD							
	BBO		5 000 €		15 000 €		25 000 €	
	SPREAD	% OBSER	SPREAD	% OBSER	SPREAD	% OBSER	SPREAD	% OBSER
<b>ETF - DEVELOPED MARKET</b>	<b>0.08%</b>	<b>99.90%</b>	<b>0.08%</b>	<b>99.89%</b>	<b>0.08%</b>	<b>99.89%</b>	<b>0.09%</b>	<b>99.89%</b>
EQUITY EUROPE - REGIONAL	0.08%	100.00%	0.08%	100.00%	0.08%	100.00%	0.08%	100.00%
EQUITY EUROPE - SINGLE COUNTRY	0.07%	100.00%	0.07%	100.00%	0.07%	100.00%	0.07%	100.00%
EQUITY NORTH AMERICA	0.05%	100.00%	0.05%	100.00%	0.05%	100.00%	0.06%	100.00%
EQUITY PACIFIC	0.34%	98.55%	0.34%	98.54%	0.34%	98.54%	0.37%	98.54%
EQUITY SHORT	0.13%	100.00%	0.13%	99.99%	0.14%	99.99%	0.14%	99.99%
EQUITY WORLD	0.08%	99.98%	0.09%	99.98%	0.09%	99.97%	0.09%	99.96%
<b>ETF - EMERGING MARKETS</b>	<b>0.19%</b>	<b>99.99%</b>	<b>0.20%</b>	<b>99.99%</b>	<b>0.21%</b>	<b>99.99%</b>	<b>0.22%</b>	<b>99.98%</b>
EQUITY EMERGING - AFRICA/MIDDLE EAST	0.52%	100.00%	0.56%	99.99%	0.60%	99.93%	0.64%	99.90%
EQUITY EMERGING - ASIA	0.22%	100.00%	0.23%	99.99%	0.24%	99.99%	0.25%	99.98%
EQUITY EMERGING - CENTRE/SOUTH AMERICA	0.31%	100.00%	0.33%	99.99%	0.35%	99.95%	0.37%	99.90%
EQUITY EMERGING - EAST EUROPE	0.27%	100.00%	0.29%	100.00%	0.31%	100.00%	0.33%	99.73%
EQUITY EMERGING - WORLD	0.13%	99.99%	0.13%	99.99%	0.15%	99.99%	0.17%	99.98%
<b>ETF - CORPORATE GOVERNMENT BONDS</b>	<b>0.07%</b>	<b>99.98%</b>	<b>0.07%</b>	<b>99.97%</b>	<b>0.07%</b>	<b>99.96%</b>	<b>0.07%</b>	<b>99.95%</b>
CORPORATE BOND - EMERGING	0.22%	99.99%	0.23%	99.99%	0.23%	99.98%	0.24%	99.98%
CORPORATE BOND - EUR	0.06%	99.97%	0.06%	99.97%	0.07%	99.96%	0.07%	99.96%
CORPORATE BOND - EX EUR	0.14%	99.92%	0.14%	99.92%	0.15%	99.92%	0.15%	99.91%
CORPORATE BOND - HIGH YIELD	0.10%	99.97%	0.11%	99.96%	0.11%	99.96%	0.12%	99.95%
GOVERNMENT BONDS - EMERGING	0.14%	99.98%	0.15%	99.95%	0.16%	99.80%	0.16%	99.69%
GOVERNMENT BONDS - EUR	0.04%	99.99%	0.04%	99.99%	0.05%	99.99%	0.05%	99.98%
GOVERNMENT BONDS - EX EUR	0.07%	99.98%	0.07%	99.97%	0.07%	99.94%	0.08%	99.92%
GOVT + CORPORATE BOND	0.08%	99.99%	0.09%	99.99%	0.09%	99.98%	0.10%	99.98%
INFLATION	0.10%	99.97%	0.11%	99.95%	0.11%	99.94%	0.11%	99.92%
LIQUIDITY	0.01%	100.00%	0.01%	100.00%	0.01%	100.00%	0.02%	100.00%
<b>ETF - OTHERS</b>	<b>0.27%</b>	<b>99.75%</b>	<b>0.27%</b>	<b>99.75%</b>	<b>0.33%</b>	<b>99.73%</b>	<b>0.41%</b>	<b>99.71%</b>
COMMODITIES	0.14%	100.00%	0.14%	100.00%	0.15%	100.00%	0.15%	100.00%
CREDIT INDICES	0.25%	99.89%	0.25%	99.89%	0.25%	99.89%	0.25%	99.86%
EQUITY SECTORS	0.16%	100.00%	0.16%	100.00%	0.16%	99.99%	0.17%	99.99%
EQUITY THEMATIC	0.36%	99.55%	0.36%	99.54%	0.46%	99.53%	0.61%	99.50%
MULTI ASSET	0.20%	99.99%	0.21%	99.99%	0.24%	99.93%	0.26%	99.51%
VOLATILITY INDICES	0.24%	100.00%	0.28%	100.00%	0.31%	99.81%	0.32%	98.29%
<b>ETF</b>	<b>0.10%</b>	<b>99.91%</b>	<b>0.10%</b>	<b>99.90%</b>	<b>0.11%</b>	<b>99.90%</b>	<b>0.12%</b>	<b>99.89%</b>

Data obtained from 1 minute snapshots of the trading book (5 levels) during trading days of the relevant month.

Market Spread: means the difference between bid and ask prices divided by the mid quote at which it was possible to buy and sell simultaneously the relevant amount.

% Obser: means the percentage of observations at which it would be possible to buy and sell simultaneously the relevant amount.

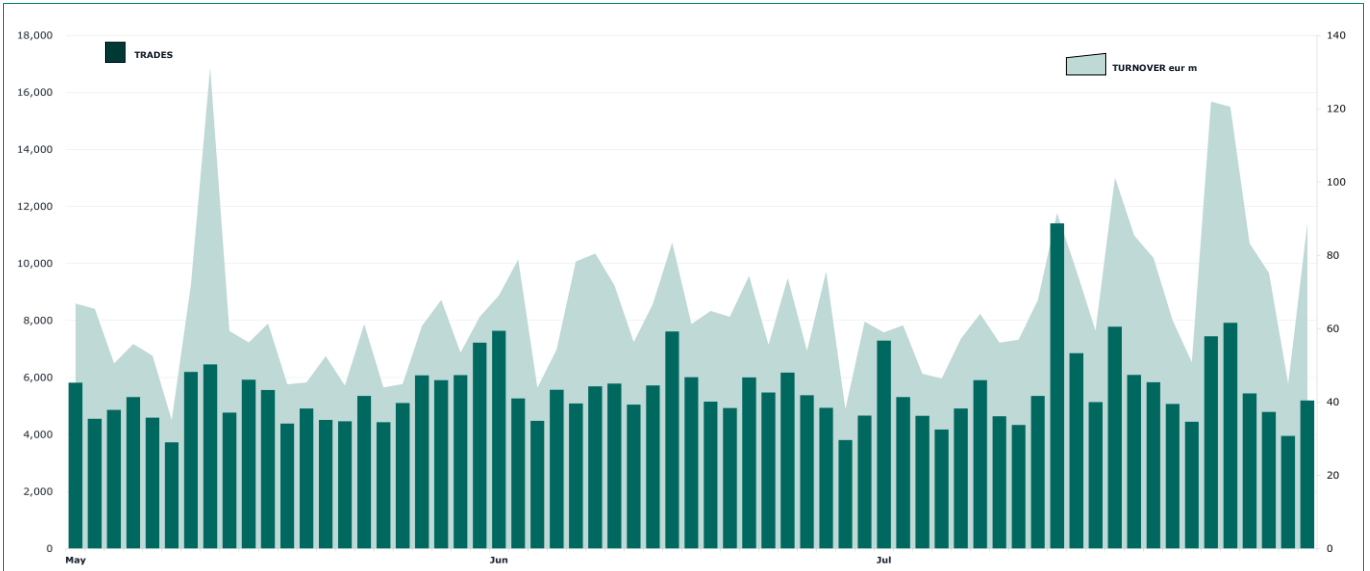
The average showed is the weighted average on AUM deposited in Monte Titoli is used: it's the average calculated taking into account the AUM (asset under management) deposited in Monte Titoli.

## News

ETFplus AUM reached the new record of €136.04bn (+15.36% vs July 2023).

New record for the ETF AUM: €127.94bn (+16.17% vs July 2023).

ESG INSTRUMENTS DAILY TURNOVER



MOST TRADED ESG INSTRUMENTS IN THE MONTH BY TRADES AND RELATIVE SPREAD

Name	Trading Code	ISIN	TRADES		SPREAD	
			number	% TOT	BBO	25 000 €
1 VANECK SEMICONDUCTOR UCITS ETF	SMH	IE00BMC38736	8,311	6.2%	0.108%	0.123%
2 FRANKLIN S&P500 PARIS CLIMATE UCITS ETF	USPA	IE00BMDP8Z72	7,956	5.9%	0.112%	0.152%
3 ISHARES GLOBAL CLEAN ENERGY UCITS ETF	INRG	IE00B1XNHC34	4,429	3.3%	0.132%	0.148%
4 WISDOMTREE ARTIF INTEL UCITS ETF USD ACC	WTAI	IE00BDVPNG13	2,995	2.2%	0.100%	0.113%
5 Amundi MSCI Semiconductors ESG Screened UCITS	CHIP	LU1900066033	2,812	2.1%	0.157%	0.192%

MOST TRADED ESG INSTRUMENTS IN THE MONTH BY TURNOVER AND RELATIVE SPREAD

Name	Trading Code	ISIN	TURNOVER		SPREAD	
			eur m	% TOT	BBO	25 000 €
1 VANECK SEMICONDUCTOR UCITS ETF	SMH	IE00BMC38736	66.4	4.0%	0.108%	0.123%
2 ISHARES GLOBAL CLEAN ENERGY UCITS ETF	INRG	IE00B1XNHC34	57.6	3.5%	0.132%	0.148%
3 JPM US RES ENH EQUIT ESG UCITS ETF USD A	JREU	IE00BF4G7076	39.5	2.4%	0.064%	0.066%
4 JPM GLOB RES ENHA EQ ESG UCITS ETF USD A	JREG	IE00BF4G6Y48	38.5	2.3%	0.056%	0.059%
5 JPM GBL RES EN IDX EQ ESG UCITS ETF EURH	JRGE	IE0000UW95D6	37.3	2.3%	0.116%	0.130%

MOST TRADED ESG INSTRUMENTS IN THE YEAR BY TRADES AND RELATIVE SPREAD

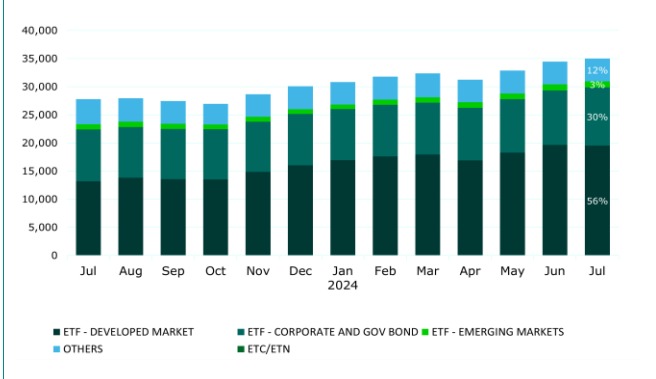
Name	Trading Code	ISIN	TRADES		SPREAD	
			number	% TOT	BBO	25 000 €
1 VANECK SEMICONDUCTOR UCITS ETF	SMH	IE00BMC38736	42,616	5.2%	0.12%	0.13%
2 ISHARES GLOBAL CLEAN ENERGY UCITS ETF	INRG	IE00B1XNHC34	29,208	3.5%	0.12%	0.14%
3 WISDOMTREE ARTIF INTEL UCITS ETF USD ACC	WTAI	IE00BDVPNG13	21,482	2.6%	0.12%	0.14%
4 ISHARES AUTOMAT & ROBOTICS UCITS ETF ACC	RBOT	IE00BYZK4552	15,204	1.8%	0.10%	0.12%
5 ISHARES MSCI WORLD SRI UCITS ETF EUR A	SUSW	IE00BYXJ069	13,680	1.7%	0.09%	0.10%

MOST TRADED ESG INSTRUMENTS IN THE YEAR BY TURNOVER AND RELATIVE SPREAD

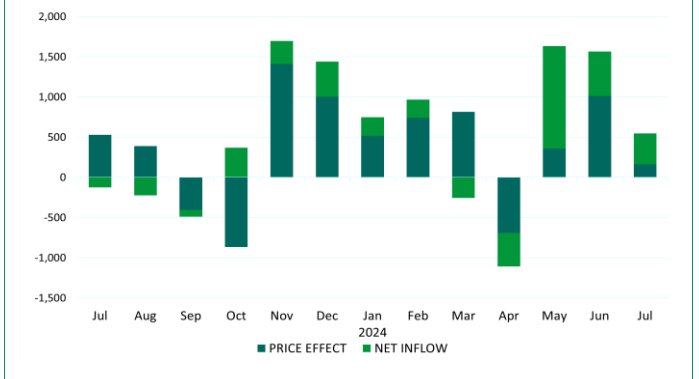
Name	Trading Code	ISIN	TURNOVER		SPREAD	
			eur m	% TOT	BBO	25 000 €
1 VANECK SEMICONDUCTOR UCITS ETF	SMH	IE00BMC38736	360.4	3.7%	0.12%	0.13%
2 ISHARES GLOBAL CLEAN ENERGY UCITS ETF	INRG	IE00B1XNHC34	257.3	2.7%	0.12%	0.14%
3 JPM GLOB RES ENHA EQ ESG UCITS ETF USD A	JREG	IE00BF4G6Y48	208.5	2.1%	0.07%	0.07%
4 JPM US RES ENH EQUIT ESG UCITS ETF USD A	JREU	IE00BF4G7076	206.0	2.1%	0.07%	0.07%
5 JPM EUR ULT SHORT INCOME EUR A UCITS ETF	JEST	IE00BD9MMF62	166.0	1.7%	0.04%	0.04%

FOCUS

ESG INSTRUMENTS AUM BY ASSET CLASS



ESG INSTRUMENTS NET INFLOW



At the moment the instruments on ETPlus that can be classified as "Sustainable" are all ETFs.

Markets Analysis  
 Piazza degli Affari, 6 - 20123 Milano  
 T +39 02 724261 | Fax + 39 02 8646.4323  
 StatEurope@euronext.com  
[www.borsaitaliana.it](http://www.borsaitaliana.it)

This publication is for information purposes only and is not a recommendation to engage in investment activities. This publication is provided "as is" without representation or warranty of any kind. Whilst all reasonable care has been taken to ensure the accuracy of the content, Euronext does not guarantee its accuracy or completeness. Euronext will not be held liable for any loss or damages of any nature ensuing from using, trusting or acting on information provided. No information set out or referred to in this publication shall form the basis of any contract. The creation of rights and obligations in respect of financial products that are traded on the exchanges operated by Euronext's subsidiaries shall depend solely on the applicable rules of the market operator. All proprietary rights and interest in or connected with this publication shall vest in Euronext. No part of it may be redistributed or reproduced in any form without the prior written permission of Euronext. Euronext disclaims any duty to update this information. Euronext refers to Euronext N.V. and its affiliates. Information regarding trademarks and intellectual property rights of Euronext is located at [www.euronext.com/terms-use](http://www.euronext.com/terms-use).

